

Entering the vehicle

❗ If a remote control is lost, a replacement can be obtained and programmed to the vehicle by a Land Rover Dealer/Authorised Repairer. Notify a Land Rover Dealer/Authorised Repairer as soon as a remote control is lost or stolen and have the remaining remote control(s) reprogrammed.

❗ The Smart Key may not be detected if it is placed within a metal container or if it is shielded by a device with a back-lit LCD screen, such as a smart phone, laptop (including when inside laptop bag), games console etc. Keep the Smart Key clear of such devices when attempting Keyless entry or Keyless starting.

Keyless entry allows the vehicle to be unlocked or disarmed, simply by operating any door handle. For keyless entry to activate, the Smart Key must be within 1.0 m (3 feet) of the door handle when it is operated. When keyless entry operates, the alarm will be disarmed and the doors unlocked according to the current security setting (single or multipoint entry). The hazard warning lamps will flash twice as confirmation (in some markets an audible warning will sound twice).

Note: The Smart Key needs only to be on the driver's person or in a non-metallic bag or briefcase. It does not need to be exposed or handled.

Note: If single point entry is the current security setting, and a door other than the driver's door is opened first, the vehicle will behave as if multi-point entry is active (i.e. all doors will unlock).

DRIVE-AWAY LOCKING

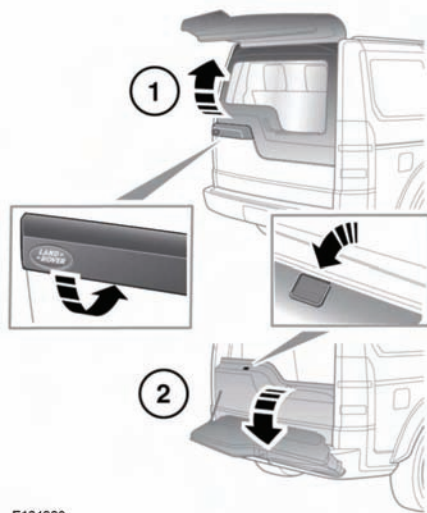
Drive-away locking automatically locks all the doors when the vehicle is in motion. This feature can be enabled/disabled via the **Vehicle set-up** menu (see **56, INSTRUMENT PANEL MENU**).

Note: Pressing the lock or unlock button on the Smart Key will override drive-away locking for the current journey.

OPENING AND CLOSING THE TAILGATE

❗ Ensure there is minimum space of 1 m (39 in) above and at the rear of vehicle before operating the tailgate. Insufficient space may result in damage to the vehicle.

❗ Do not operate the tailgate if a cycle rack is fitted to the tailgate. Remove any cycles and/or racks before operating the tailgate.



E134908