

27. TV channel list: First press displays list, further presses navigate forwards through list.
28. TV presets list: First press displays list, further presses navigate backwards through list.
29. TV channel list: First press displays list, further presses navigate down list.
30. TV/Radio band selection.
31. DVD menu display.
32. Browse: Select to view contents of connected device or CD.
33. Open next folder up.

## USING RSE

**Note:** On new remote controls, a plastic strip isolates the battery from the electrical contacts. Before you use the remote control for the first time, pull out and discard the plastic strip.

Once rear seat entertainment has been selected on the touch screen, it can be operated with the remote control. To ensure the system responds to your selections, the upper end of the remote control should be pointed towards the applicable screen in the back of the front head restraint.

To activate the system, press the RSE on/off button (1), followed by the applicable user system button (4 or 22) and then the required audio or video function button. Subsequent selections on the remote control will operate the last selected user system. To avoid accidental operation of the wrong user system, it is advisable to always select the required user system before making any other selection.

## HEADPHONES

The volume control for each set of headphones is adjusted on the headphones.

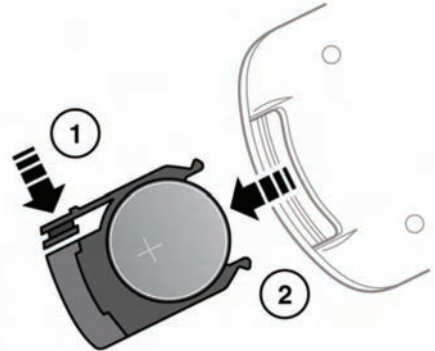
Press the channel selector button to cycle through available channels. Select the channel appropriate for the required screen.

**Note:** These headphones are not intended for use by the driver or outside the vehicle.

**Note:** The earpiece exteriors must remain exposed to the infra red transmitter in the overhead console. Any barrier will prevent them from working correctly.

When not in use, the headphones should be turned off.

## REMOTE CONTROL BATTERY



E136271

To renew the battery:

1. Press the locking catch inwards.
2. Pull out the battery cradle.

Install a new CR2025 type battery (available from your Dealer/Authorised Repairer), with the positive (+) side positioned as shown.



Avoid touching the new battery, as moisture/oil from fingers can reduce battery life and corrode the contacts.

## Rear seat entertainment

Push in the battery cradle and ensure the locking catch is engaged.



Battery disposal: Used batteries must be disposed of correctly, as they contain harmful substances. Seek advice on disposal from your Dealer/Authorised Repairer or local authority.