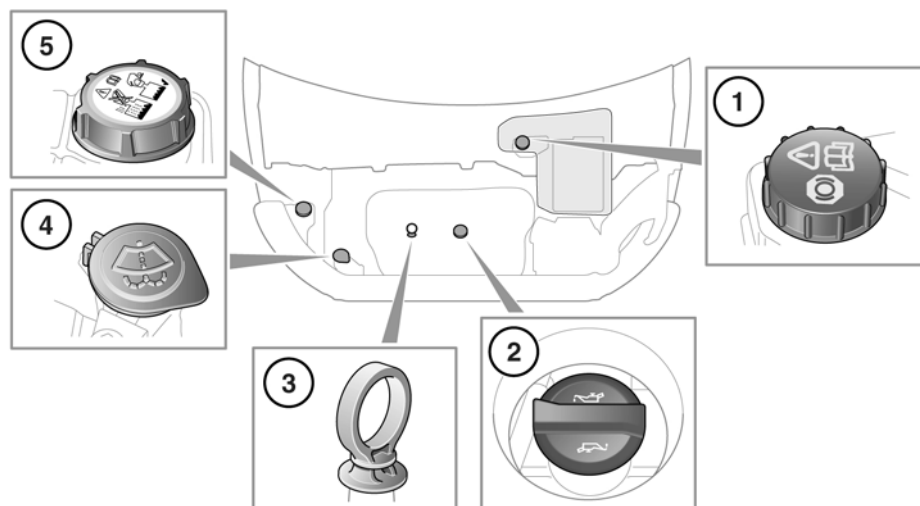


ENGINE COMPARTMENT OVERVIEW



SL1948

1. Brake fluid reservoir cap (beneath cover):
2. Engine oil filler cap.
3. Engine oil level dipstick.
4. Washer fluid filler cap.
5. Engine coolant filler cap.

⚠ WARNING

While working in the engine compartment, always observe the safety precautions. See 166, SAFETY IN THE GARAGE

⚠ WARNING

Do not drive if there is a possibility that leaked fluid will come into contact with a hot surface, such as the exhaust.

ENGINE OIL LEVEL CHECK

NOTICE

Check the engine oil weekly. If any significant or sudden drop in oil level is noted, seek qualified assistance.

NOTICE

Never allow the oil level to fall below the lower mark or notch on the dipstick.

NOTICE

If the message **ENGINE OIL PRESSURE LOW** is displayed, stop the engine as soon as it is safe to do so and seek qualified assistance. Do not start the engine until the cause has been rectified.