

Entering the vehicle

POWERED TAILGATE OPENING HEIGHT

The maximum opening height can be set as required. This is useful in parking areas with low ceiling heights or just for ease of use.

1. Open the tailgate to the position which you want to set as the maximum height. Press any tailgate control to stop movement at the required position. Final position can be achieved manually if required.
2. Ensure that the tailgate is stationary for at least three seconds.
3. Press and hold the tailgate close switch for ten seconds to set the maximum opening height.
4. Close the tailgate, then open again to check that it opens to the set height.

Note: If, after performing part 3 of the process the tailgate closes automatically, the required height has not been set. Repeat the process ensuring that all steps are adhered to.

To reset the maximum opening height, repeat the process, but when the tailgate reaches its current set height, manually move it to the fully open position before pressing and holding the button.

POWERED TAILGATE PROGRAM LOSS

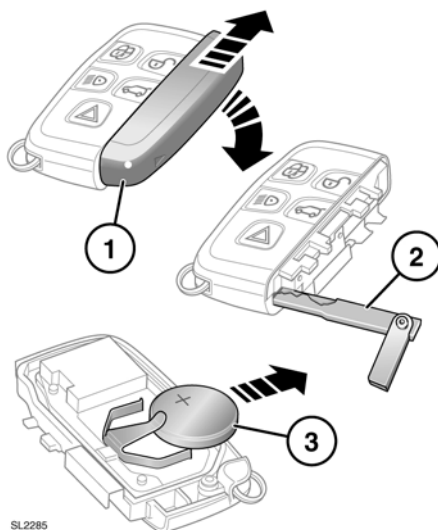
The powered tailgate may lose its position memory if there are multiple object detections or if battery voltage is low. Powered operation may be inhibited. To reset the tailgate;

1. Manually close the tailgate.
2. Press a release switch.
3. Allow the tailgate to power fully open or to the previously set position.
4. Press and release the close switch.
5. Allow the tailgate to power close fully.

The tailgate set position memory will now be restored.

SMART KEY BATTERY REPLACEMENT

When the battery needs replacing, there will be a significant decrease in the effective range and the message SMART KEY BATTERY LOW will be displayed in the message center.



SL2285

To replace the battery:

1. Remove the cover by sliding in the directions of the arrows.
2. Use the emergency key blade to separate the Smart Key body.
3. Fit a new and unused CR2032 type battery (available from your Land Rover Retailer/Authorized Repairer), with the positive (+) side upwards.

Note: Avoid touching the new battery, as moisture/oil from fingers can reduce battery life and corrode the contacts.