

WHEEL CHANGING SAFETY

Before raising the vehicle or changing a wheel, ensure that you read and comply with the following warnings.

⚠ WARNING

Always find a safe place to stop, off the highway and away from traffic.

Apply the parking brake and engage Park (P).

Switch on the hazard warning lamps.

Ensure that the front wheels are in the straight ahead position.

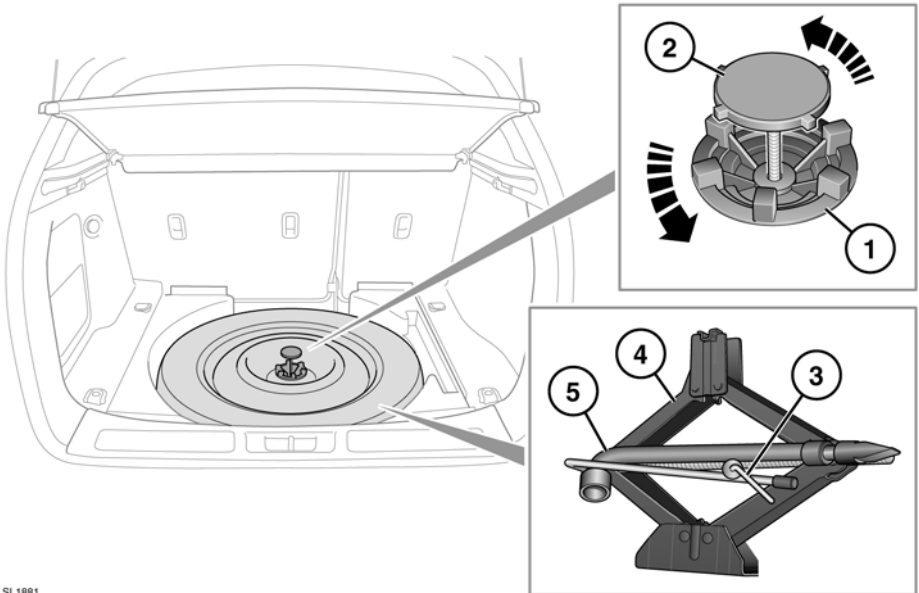
Disconnect trailer from vehicle.

Ensure that all passengers and animals are out of the vehicle and in a safe place, away from the highway.

Place a warning triangle at a suitable distance behind the vehicle, facing towards oncoming traffic.

Ensure that the vehicle is on firm level ground.

TOOL KIT



SL1881

1. Temporary spare wheel locking ring.
2. Temporary spare wheel retaining bolt.
3. Tool kit retaining bolt.
4. Jack.
5. Wheel brace.

⚠ WARNING

The spare wheel is heavy and if handled incorrectly may cause injury. Use extreme caution when lifting or maneuvering the wheels.