

If you are using a Bluetooth® device, you can control playback using the touch screen, but some controls are unavailable.

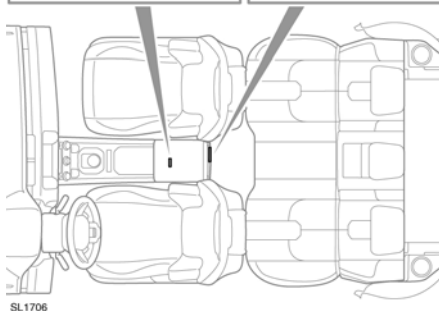
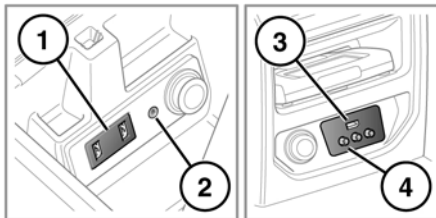
For further information on Bluetooth® and device compatibility, see **141, BLUETOOTH® INFORMATION.**

If you are using any portable media device via the AUX socket, then you must control playback from the device itself.

## **NOTICE**

*Land Rover does not recommend the use of a Hard Disc Drive via the USB link while the vehicle is in motion. These devices are not designed for in car use and may be damaged.*

## CONNECTING A DEVICE



1. USB/iPod sockets.
2. 3.5 mm AUX socket.
3. USB/iPod socket.
4. Rear media AV sockets.

Connect the device into the appropriate socket.

**Note:** *Use the cable supplied with your media device to connect to the USB socket.*

## **NOTICE**

*Read the manufacturer's instructions for any device, before it is connected to the audio system. Ensure that the device is suitable, and comply with any instructions regarding connection and operation. Failure to do so may result in damage to the vehicle's audio system or the auxiliary device.*

When an iPod is connected, playback will continue from the point at which it was last playing, provided the iPod battery is in a good state of charge.

## **NOTICE**

*Do not plug non-audio devices into the USB port.*

**Note:** *A USB hub cannot be used to connect more than one USB device to the audio unit.*

**Note:** *Devices connected to the USB ports will be charged, but devices that are fully discharged will not play.*

**Note:** *Options such as **Repeat** and **Mix** relate to the device currently playing, they will not apply to any subsequent device.*

The 3.5mm AUX socket allows additional equipment (e.g. personal stereos MP3 player, hand-held navigation unit, etc.) to be connected to the audio system.

The auxiliary power socket, situated next to the auxiliary jack, can be used to power or charge any suitable device.

**Note:** *iPod shuffle may be connected via the AUX socket.*