

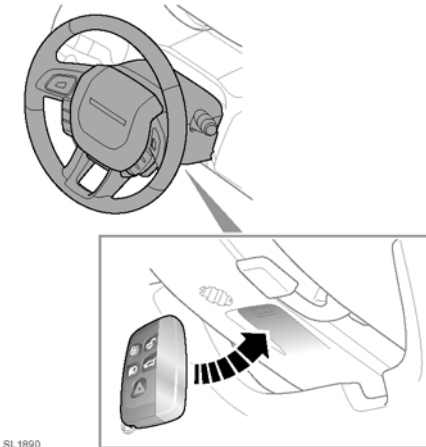
3. When the engine re-starts, select transmission position **D**.

### KEYLESS START BACKUP

If the vehicle has been unlocked using the emergency key blade or the Smart Key is not detected by the vehicle, it will be necessary to use the keyless start backup to disarm the alarm and start the engine.

The keyless start backup can only be used when the message **Smart Key Not Found Refer to Handbook** is displayed in the message center.

**Note:** If the message **Smart Key Not Detected** is displayed, ensure that the key is being held in the correct position and try again.



Position the Smart Key against the underside of the steering column cover with the buttons facing downwards.

With the brake pedal depressed, press and release the **START/STOP** button to start the engine.

When the engine starts, you no longer need to hold the Smart Key beneath the steering column.

**Note:** If the Smart Key is not recognized or the engine still fails to start, consult your Retailer.