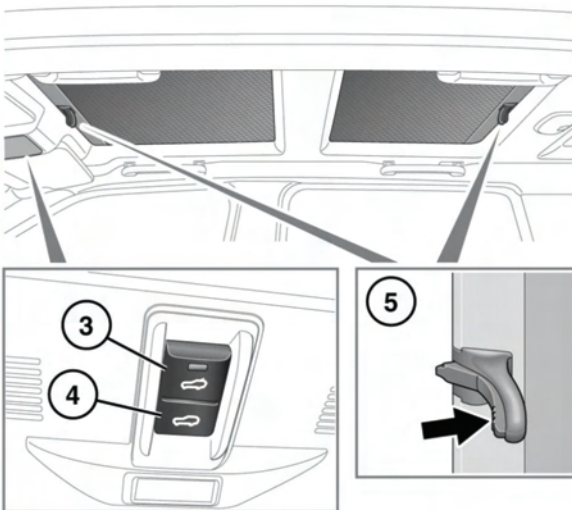
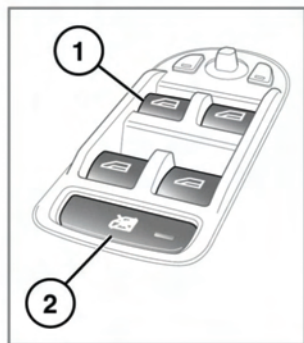


ELECTRIC WINDOWS



E147274

1. Window switches.

Note: The windows will operate for 5 minutes after the engine is switched off, as long as none of the doors are opened.

2. Rear window isolator button.



If children are carried in the rear seats, the isolator switch should be used to prevent operation of the windows. If the windows are operated by young children there is a risk of serious injury or death.

3. Sunroof close/tilt switch:



Wherever possible remove any snow, ice, dirt, and leaves etc. from the sunroof mechanism before closing. Failure to do so may damage the sunroof mechanism.

- With the roof closed, briefly press to tilt the sunroof open.
- With the roof fully open, briefly press to close the roof.

Press the button again to stop movement.

4. Sunroof open/close switch:

- With the roof closed, briefly press to fully open. Press again to stop movement.
- With the roof tilted open, press and hold to close the roof. Releasing the switch will stop roof movement.

Note: The sunroof will operate for 30 seconds after the ignition is turned off, provided that a front door is not opened.

5. Sun blind:

- To open, push upwards on the textured part of the handle. Then, slide the blind into the panel between the sunroof and the headlining.
- To close the sun blind, pull across the aperture until it locks in place.