

To ensure that the anti-corrosion properties of the coolant are retained, the antifreeze content should be checked once a year and completely renewed every ten years, regardless of distance travelled. Failure to do so may cause corrosion of the radiator and engine components.

The specific gravity of a 50% antifreeze solution at 20°C (68°F) is 1.068 and protects against frost down to -40°C (-40°F).

**Note:** In an emergency - and only if the approved antifreeze is unavailable - top-up the cooling system with clean water, but be aware of the resultant reduction in frost protection. Do not top-up or refill with conventional antifreeze formulations. If in doubt consult a qualified technician.

Ensure the cap is tightened fully after top-up is complete by turning the cap until the ratchet cap clicks.

## CHECKING THE BRAKE FLUID LEVEL



**Brake fluid is highly toxic - keep containers sealed and out of the reach of children. If accidental consumption of fluid is suspected, seek medical attention immediately.**



**If the fluid comes into contact with the skin or eyes, rinse immediately with plenty of water.**



**Do not drive the vehicle with the fluid level below the MIN mark.**

If the quantity of fluid in the brake/clutch reservoir drops below the recommended level, a red warning indicator in the instrument pack will illuminate.

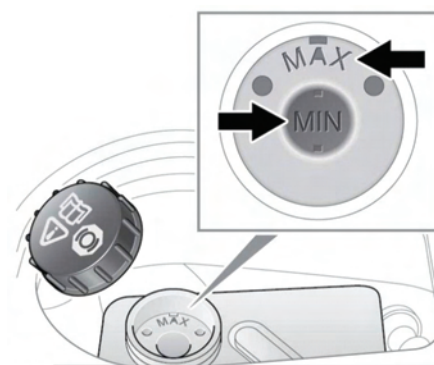
**Note:** If the warning indicator illuminates while the vehicle is being driven, stop the vehicle as soon as safety permits by gently applying the brakes.

Check and top-up the fluid level if necessary.



**Seek qualified assistance immediately if brake pedal travel is unusually long or if there is any significant loss of brake fluid. Driving under such conditions could result in extended stopping distances or complete brake failure.**

With the vehicle on level ground, check the fluid level at least every week (more frequently in high mileage or arduous operating conditions).



1. Clean the filler cap before removing to prevent dirt from entering the reservoir.
2. Remove the filler cap.
3. The brake fluid level should be between the **MIN** and the **MAX** marks.

The fluid level may drop slightly during normal use as a result of brake pad wear but should not be allowed to drop below the **MIN** mark.

## TOPPING UP THE BRAKE FLUID



Brake fluid will damage painted surfaces. Soak up any spillage with an absorbent cloth immediately and wash the area with a mixture of car shampoo and water.