

## METHYL TERTIARY BUTYL ETHER (MTBE)

Unleaded fuel containing an oxygenate known as MTBE can be used provided that the ratio of MTBE to conventional fuel does not exceed 15%. MTBE is an Ether based compound derived from Petroleum, which has been specified by several refiners as the substance to enhance the Octane rating of fuel.

## REFORMULATED GASOLINE

Several petroleum companies have announced the availability of reformulated fuels. These fuels are specially formulated to further reduce vehicle emissions. Land Rover fully supports all efforts to protect and maintain ambient air quality, and encourages the use of reformulated gasoline where available.

## DIESEL ENGINED VEHICLES

Land Rover recommends that only premium brand diesel fuels are used.

**Note:** Land Rover vehicles are capable of running with up to a 7% blend of bio-diesel in accordance with European Standard EN590.

## SULPHUR CONTENT

ⓘ If your vehicle is fitted with a Diesel Particulate Filter (DPF) the maximum Sulphur content must not exceed 0.005%. Using an incorrect fuel will cause serious damage to the DPF.

The Sulphur content of diesel used in Land Rover vehicles should not exceed 0.3% (3000 parts per million).

In some countries diesel will contain higher levels of Sulphur, which will require reduced service intervals to reduce the effects on engine components. If in doubt contact a local Land Rover Dealer/Authorised Repairer for advice.

## RUNNING OUT OF FUEL

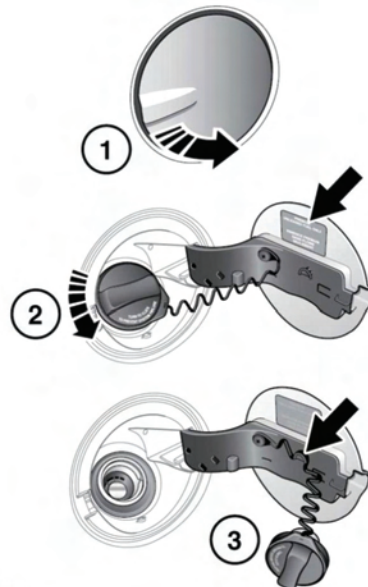
ⓘ Avoid running out of fuel. Doing so can cause damage to the vehicle's engine, fuel, and emission control systems.

If the vehicle does run out of fuel, a minimum of 4 litres (0.8 gallons) will be required to restart the engine. The vehicle will need to be driven 1.6-5 km (1-3 miles) in order to reset the engine management and monitoring systems.

**Note:** If the vehicle does run out of fuel, seeking qualified assistance is advisable.

## FUEL FILLER FLAP

⚠ Take note of all warnings and instructions given on the label affixed to the inside of the filler flap.



E136799