

Your vehicle is fitted with a maintenance free battery.

CONNECTING JUMP LEADS



Rotating parts of the engine can cause serious injury. Take extreme care when working near rotating parts of the engine.



Before attempting to start the disabled vehicle, make sure that the parking brake is applied, or suitably chock the wheels. Make sure that Park is selected or the manual gearbox is in neutral.



Suitable eye protection must be worn when working in the area of the battery.



Do not attempt to start the disabled vehicle if it is suspected that the electrolyte in the battery is frozen.



During normal use, batteries emit explosive gas sufficient to cause severe explosions and capable of causing serious injury - keep sparks and naked lights away from the engine compartment.



Make sure there is no physical contact between the donor and disabled vehicles other than the booster cables.

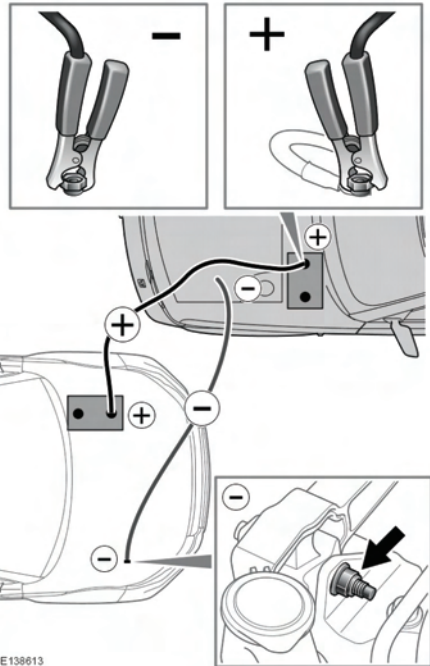


Make sure that the slave battery or starting aid is a 12 volt device.



Disconnect the battery cables prior to operating any electrical equipment.

Note: Before connecting jump leads ensure that the battery connections on the disabled vehicle are correct, and that all electrical equipment has been switched off.



E138613



Switch off all electrical equipment before following this procedure. All electrical equipment must remain switched off until the procedure is complete.



Exercise extreme caution during this procedure to avoid contact with any components in the engine compartment that are moving at high speed, carrying high voltage, or hot.

1. Connect the positive (Red) jump lead to the positive (+) terminal on the donor vehicle's battery.
2. Connect the other end of the positive jump lead to the positive (+) terminal on the discharged battery.