



## PARK ASSIST


Park assist is an aid to parallel parking in tight parking slots. For the system to operate correctly, your vehicle must be parallel to a line of parked vehicles along which you intend to search for a parking space. Your front wheels must be in the straight ahead position. Parking on a bend may cause the system to miscalculate distances.


When the sensors detect a space sufficient to park in, an instruction will be displayed in the Message centre.


The actual parking manoeuvre is controlled by the vehicle, without your hands on the steering wheel. The Message centre will advise when the steering wheel must be released.

 **Park assist is a driving aid only. It remains the driver's responsibility to drive with due care and attention during parking manoeuvres.**

 **Park assist may not detect moving objects such as children and animals, until they are dangerously close. Always use extreme caution when manoeuvring.**

 Park assist sensors may not detect some obstructions, e.g. narrow posts, small objects close to the ground, mesh fences and, in some circumstances, bicycles or motor cycles parked alongside the kerb.


 All sensors must be kept clean and free from debris or obstructions, e.g., leaves, mud, snow or insects. Failure to keep the sensors clean may result in sensor miscalculation or false indications.

 Park assist must not be used if:  
- A temporary spare wheel is in use.

- A sensor is damaged or the bumper is damaged sufficiently to affect a sensor mounting point.

- A sensor is obstructed by items attached to the vehicle, e.g., bumper covers, a bicycle rack, a trailer, stickers, etc.

- The vehicle is being used to transport a load that extends beyond the vehicle perimeter.

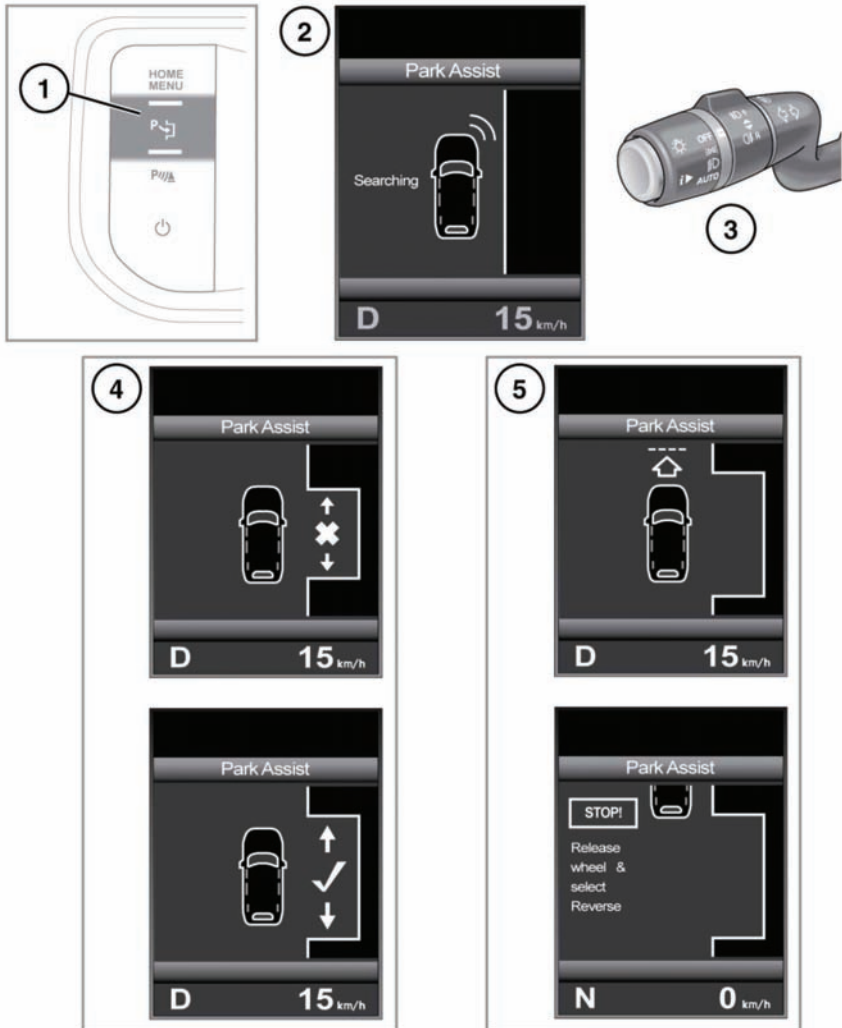
 When Park assist searches for an appropriate parking space, there must be an acceptable distinction between the road surface and the kerb height. Damaged or very low kerbs or kerbs covered with debris or snow may cause a sensor miscalculation.

**Note:** All doors, should be securely closed.

**Note:** During any Park assist manoeuvre, the parking aid system will remain active and will sound when objects are detected near the vehicle.

**Note:** A parking manoeuvre can be cancelled at any point by holding / turning the steering wheel or by pressing the Park assist switch.

**Note:** In a situation where the rows of parked vehicles on either side of the road are close enough for Park assist to sense them and Park assist determines that there is not enough manoeuvring space for reverse parking, the space will be rejected, even if the driver believes the space is large enough to park the vehicle. The driver retains the option to switch off Park assist and to attempt the parking manoeuvre manually.



E138574

1. To activate, press the Park assist switch while driving forwards at less than 30 km/h (19 mph). The indicator lamp in the switch illuminates.

**Note:** If vehicle speed exceeds 30 km/h (19 mph), **SLOW DOWN!** is displayed until

speed decreases to less than 30 km/h (19 mph) again. If vehicle speed is not reduced, Park assist is de-activated and the indicator light in the switch is extinguished.

**Note:** Park assist sensors can be affected by sudden temperature differentials. For

example, if the vehicle is moved from a warm interior into a cold exterior temperature, the sensors will require time to adjust. The same applies if the move is from a cold situation into a significantly warmer ambient temperature.

2. The **Park Assist** display appears in the Message centre and shows the **Searching** message and graphic. All messages and instructions are displayed here. Take action when the text is an instruction.

**Note:** For Park assist to operate effectively, maintain a parallel distance of 0.5 to 1.5 metres (1.6 to 4.9 ft) between your vehicle and the line of parked vehicles/obstacles in which you want to park.

3. When first activated Park assist searches for a space on the front passenger side of the vehicle. To search for a space on the driver's side, signal a turn in that direction.
4. As you drive forward, the size of potential parking spaces is assessed and displayed graphically.
5. A short confirmation tone is given when a suitable space is found and a message to stop or to drive forward to a starting point will be given, depending on the vehicle's current position.



Make a visual check before starting the reversing manoeuvre to ensure that the space has not changed in any way, e.g., a pedestrian has stepped into the space.

6. An instruction to select Reverse (**R**) will follow. Park assist will then take control of the vehicle's steering system and the steering wheel must be released. Release the foot brake carefully to move the vehicle slowly into the parking space. Follow the instructions in the Message centre.



The driver must maintain full control of the accelerator and brakes throughout the manoeuvre.

**Note:** If the steering wheel is manually adjusted while Park assist has control of the steering, Park assist will de-activate and the indicator lamp in the Park assist switch will extinguish.

**Note:** Park assist can be reactivated by pressing the Park assist switch and the previous parking manoeuvre will be resumed.

**Note:** If vehicle speed exceeds 6 km/h (4 mph) during the parking manoeuvre, Park assist will display a **SLOW DOWN!** message until speed decreases to less than 6 km/h (4 mph). If vehicle speed is not reduced, Park assist will de-activate and the indicator lamp in the Park assist switch will extinguish.

7. If further manoeuvring is required in the parking space, select Drive (**D**)/Reverse (**R**) and continue to follow instructions displayed in the Message centre.
8. When the parking manoeuvre is completed, **STOP** will be displayed.

If a system fault is detected, a continuous tone will sound and a message will be displayed in the Message centre. Contact your Dealer/ Authorised Repairer as soon as possible.