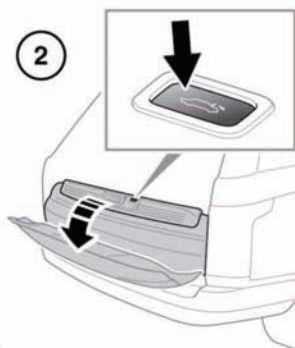
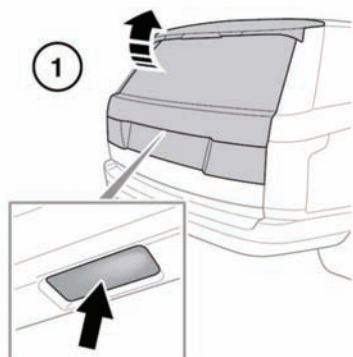


OPENING AND CLOSING THE TAILGATE

❗ Ensure there is minimum space of 1.0 metre (39 in) above and at the rear of vehicle before operating the tailgate. Insufficient space may result in damage to the vehicle.

❗ Do not operate the tailgate if a cycle rack is fitted to the tailgate. Remove any cycles and/or racks before operating the tailgate.



1. Upper tailgate release. Lift the upper tailgate to open.

Note: When using the upper tailgate external release switch, all doors must be unlocked and the gear selector in either Park (P) or (N) position.

2. Lower tailgate release: only visible when the upper tailgate is open. Pull the lower tailgate downwards to open.

The upper tailgate can also be released using the following methods.

- The interior tailgate release switch. See **276, DRIVER CONTROLS**.
- The Smart Key tailgate release switch. See **4, UNLOCKING THE VEHICLE**.

Note: The tailgate will not open if the vehicle is travelling at or above approximately 5 km/h (3 mph).

E140867