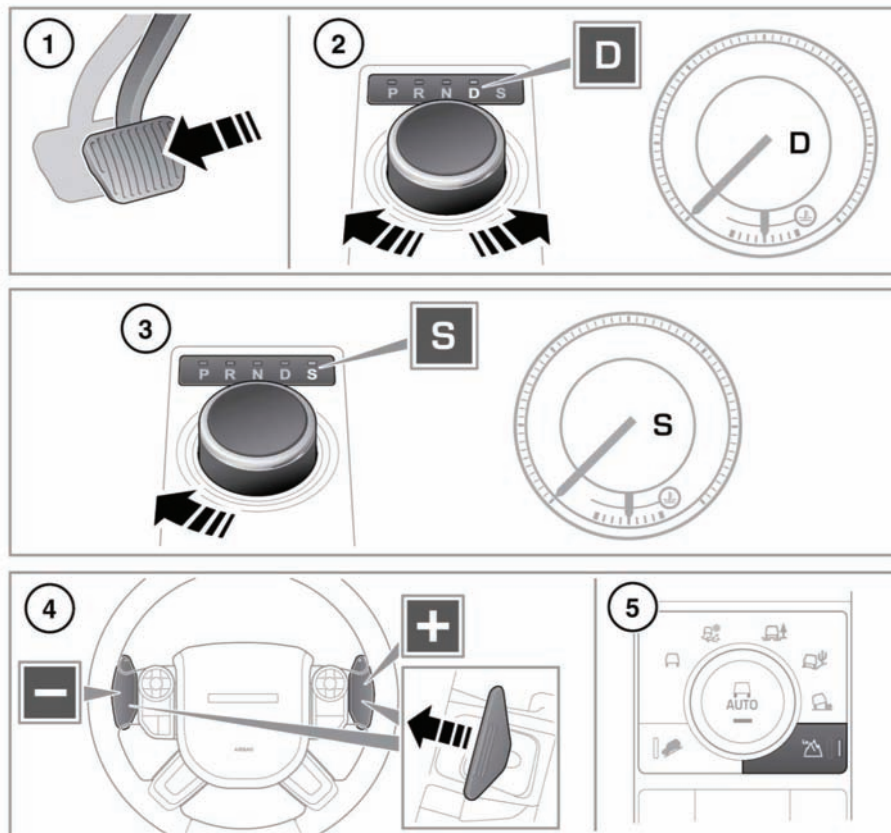


AUTOMATIC TRANSMISSION



E140336

1. To select Drive (**D**) when the vehicle is stationary, first apply the brake pedal.
2. Rotate the rotary selector to Drive (**D**). The paddle shifts can be used in this mode.
Note: Gear selection will revert back to fully automatic **D** mode if use of the paddles is not maintained.
 To manually return to fully automatic **D** mode, pull and hold the right paddle for 2 seconds.
3. Press the selector down and rotate to **S** to select Sport mode.
S will appear in the instrument panel and the LED by the selector will illuminate.
4. Manual gear selection (CommandShift™) can be used when Sport (**S**) is selected.
5. **D** will appear in the instrument panel and the LED by the selector will illuminate.