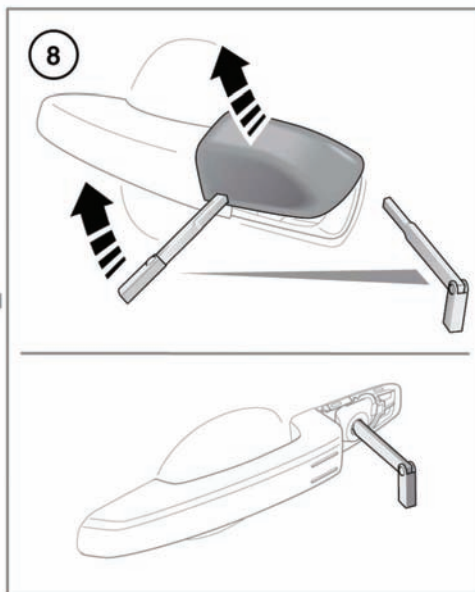
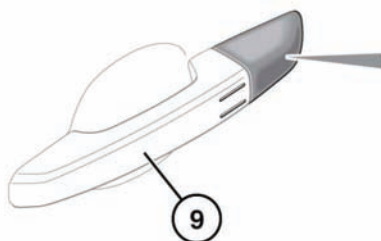
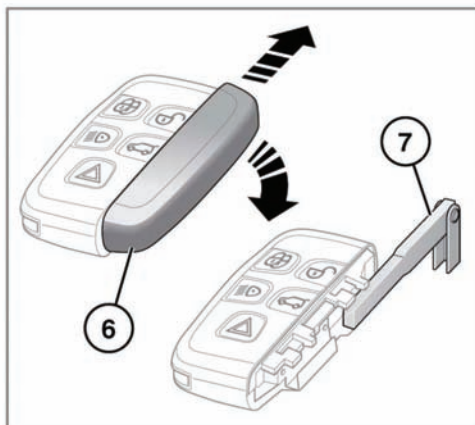
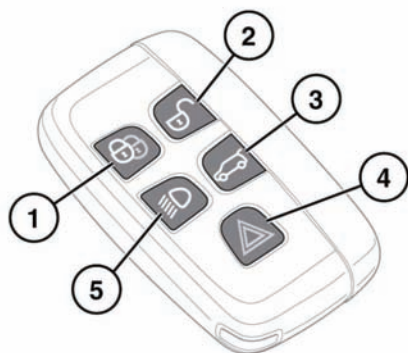


Entering the vehicle

UNLOCKING THE VEHICLE



E140776



To prevent accidental operation, never leave the Smart Key in the vehicle if children or animals are also left in the vehicle.

Note: The operational range of the Smart Key will vary considerably depending on atmospheric conditions and interference from other transmitting devices.

Note: If any door or the tailgate is unlocked 10 times within a short period, the latch is disabled for approximately one minute.

The vehicle is supplied with two Smart Keys. The Smart Keys act as remote controls for the locking and alarm system and allow the vehicle to be locked, unlocked and driven without the use of a conventional key. See **7, KEYLESS ENTRY, 13, KEYLESS LOCKING** and **96, STARTING THE ENGINE**. Each Smart Key also has an emergency key housed in a slide out compartment.

1. Lock:

- Press to secure the vehicle. The vehicle can be Single or Double locked. See **12, SINGLE LOCKING** and **12, DOUBLE LOCKING**.

Also see, **13, GLOBAL CLOSING**.

2. Unlock:

- Press briefly to unlock the vehicle and deactivate the alarm. The hazard warning lamps will flash twice to indicate that the vehicle is unlocked and the alarm has been deactivated. The daylight running lamps, interior lamps and approach lamps will illuminate to assist entry to the vehicle. Also see **6, GLOBAL OPENING**.

3. Tailgate release:

- Press briefly to open the tailgate. If the vehicle is locked and armed, the security system will remain active while the tailgate is open, but intrusion and inclination sensing systems will be disabled.

When closing the tailgate again, if the vehicle is already locked and armed, the hazard warning lamps will flash after a few seconds to confirm the full alarm system has been reactivated. There will also be an audible sound if

the vehicle was double locked. See **8, OPENING AND CLOSING THE TAILGATE**.

Note: Ensure that the Smart Key does not remain in the vehicle prior to closure. If the vehicle is in an area of localised Radio Frequency (RF) interference or the Smart Key is shielded by metal objects, the vehicle may close and lock with no means of opening again.

4. Panic alarm:

- Press and hold for three seconds (or press three times within three seconds) to activate the horn and the hazard lamps.
- Once active for more than five seconds, the alarm can be cancelled by pressing the button and holding for three seconds (or pressing three times within three seconds).
- The emergency alarm will also be cancelled if a valid Smart Key is present when the START/STOP button is pressed.

5. Approach illumination:

- When approaching the vehicle during darkness, press to switch on the approach illumination. Press again to turn the approach lamps off.

Note: In some markets a second press of the button will turn on the headlamps and reversing lamps. A third press will be required to turn the lamps off.

- The approach illumination period set at the factory is 30 seconds. This delay period may be configured to provide illumination lasting between 0 and 240 seconds. See **63, INSTRUMENT PANEL MENU**.