

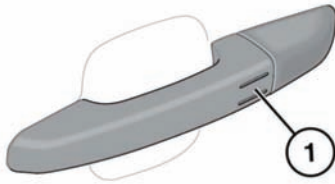
KEYLESS LOCKING



Never double lock the vehicle with people, children or pets inside. In the event of an emergency they would be unable to escape and the emergency services would be unable to release them quickly.



The Smart Key may not be detected if it is placed within a metal container or if it is shielded by a device with a back-lit LCD screen, such as a smart phone, laptop (including when inside a laptop bag), games console etc.



E140859

The vehicle will not lock automatically.

Note: Keyless locking will activate only if the Smart Key is detected outside the vehicle. If no Smart Key is present, no locking will occur.

- To single lock the vehicle touch the keyless locking sensor (1) once. The hazard warning lamps will flash once to confirm and the power fold mirrors will fold in (if enabled).
- To double lock the vehicle, touch the keyless locking sensor (1) twice within 3 seconds. The hazard warning lamps will flash twice to confirm accompanied by an audible warning.

Note: When locking the vehicle via Keyless locking, if one or more of the doors, the bonnet or the tailgate is not fully closed, or the ignition is ON, the vehicle will NOT lock. There will be NO audible mislock error warning. The hazard warning lamps will NOT flash and the door mirrors (if enabled) will NOT fold in. Check that all doors, the bonnet and the tailgate are closed properly. Ensure the ignition is turned OFF and lock the vehicle again. If the mislock persists, consult a Land Rover Dealer/Authorised Repairer.

GLOBAL CLOSING



Ensure that no children, pets, or obstructions are in any open aperture before operating global closing. Safety mechanisms are in place to prevent serious injury, however injuries can still occur.

Press and hold the lock button on the Smart Key for 3 seconds. The vehicle will single lock and the full alarm will be activated immediately. After 3 seconds any open windows will be closed. Press the lock button once more to double lock the vehicle.

Note: Global closing does not close the sunroof.

This feature can be enabled/disabled via the **Vehicle Set-Up** menu (see **63, INSTRUMENT PANEL MENU**).