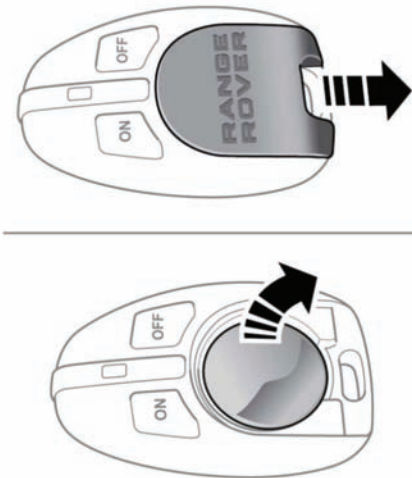


ADDITIONAL REMOTES

Additional remote controls can be programmed to operate the heater. A maximum of 3 remotes can be programmed to each vehicle. Contact a Land Rover Dealer/Authorised Repairer to purchase additional remotes and have them programmed to the vehicle.

REPLACING THE REMOTE BATTERIES



E144902

With the front of the remote control facing upwards, press on the rear of the access cover and push completely off to reveal the battery compartment. Remove the old battery and, ensuring that the correct polarity is maintained, insert a new, unused 3 volt, CR1/3N battery. Align and push the cover back to the original position.