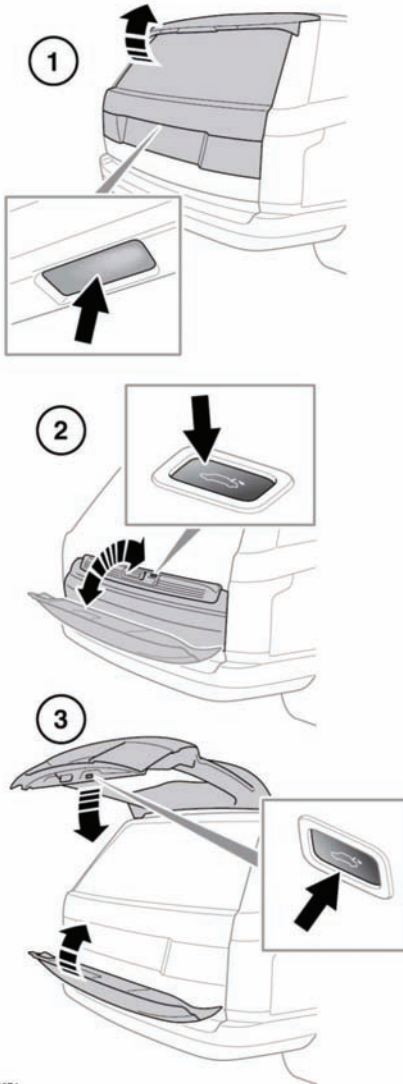


OPENING AND CLOSING THE POWERED TAILGATE



E140871

1. Upper tailgate open/close. Press to open/close the upper tailgate.
2. Lower tailgate open/close. Press to open or close the lower tailgate.
3. Tailgate complete close. This button will close the upper and lower tailgate

After the tailgate has opened to its set height, it can be manually raised or lowered. If the tailgate fails to open or close correctly, close it manually then press the tailgate release switch again.

As the closing tailgate approaches the closed position, it will 'soft close' to the fully-closed position. If the vehicle was previously locked, the alarm will re-arm. The hazard warning lamps will flash to confirm the alarm status. An audible confirmation may also be given.

Note: If a tailgate switch is pressed while the tailgate is opening or closing, all movement will stop. However, if a switch is pressed during the 'soft close' stage, the open request will be ignored.

Note: The tailgate has a minimum closing height, below which it will not power close. Open the tailgate manually to the fully open position and then press the tailgate complete close button.



Before operating the tailgate, ensure that anyone in the vicinity does not have any part of their body in a position where it could be trapped. Note that the 'soft close' action does not incorporate object detection. Death or serious injury could occur, even with an object detection system.

Object detection while opening: If an object is detected that would interfere with the tailgate opening, tailgate movement will stop. Remove any obstructions and press the tailgate switch again to open.