







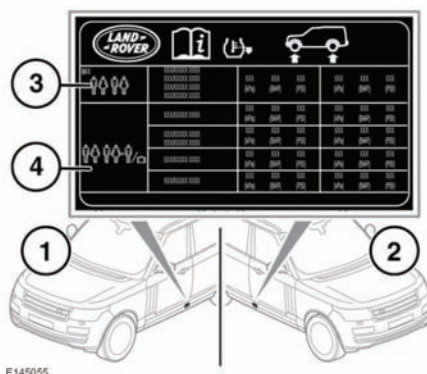
by a tyre repair centre or a Land Rover Dealer/Authorised Repairer.

TYRE PRESSURES

-  **All tyre pressures, including the spare, should be checked regularly using an accurate pressure gauge, when the tyres are cold.**
-  **Pressure checks should be carried out only when the tyres are cold, and the vehicle has been stationary for more than three hours. A hot tyre at, or below, recommended cold inflation pressure, is dangerously under-inflated.**
-  **Never drive your vehicle if the tyre pressures are incorrect. Under-inflation causes excessive flexing and uneven tyre wear. This can lead to sudden tyre failure. Over-inflation causes harsh ride, uneven tyre wear and poor handling.**
-  **Under-inflation also reduces fuel efficiency and tyre tread life and may affect the vehicle's handling and stopping ability.**
-  **If the vehicle has been parked in strong sunlight, or used in high ambient temperatures, do not reduce the tyre pressures. Move the vehicle into the shade and allow the tyres to cool before rechecking the pressures.**

The recommended tyre pressures for light and heavy loads are listed on a label located at the base of the driver's door opening.

-  **The loading of the vehicle should always be considered when checking and adjusting tyre pressures.**



1. Tyre information label location on a left-hand drive vehicle.
2. Tyre information label location on a right-hand drive vehicle.
3. Light load information.
4. Heavy load information.

Check the tyres, including the spare, for condition and pressure on a weekly basis and before long journeys.

If tyre pressures are checked while the vehicle is inside a protected covered area (e.g. a garage) and subsequently driven in lower outdoor temperatures, tyre under-inflation could occur.

A slight pressure loss occurs naturally with time. If this exceeds 14 kPa / 1.4bar / 2 psi per week, have the cause investigated and rectified by qualified personnel.

If it is necessary to check tyre pressures when the tyres are warm, you should expect the pressures to have increased by up to 30 - 40 kPa / 0.3 - 0.4 bar / 4 - 6 psi. Do not reduce the tyre pressures to the cold inflation pressure under these circumstances. Allow the tyres to cool fully before adjusting the pressures. For standard tyre pressures see **215, WHEEL AND TYRE SIZES**.