

Note: If the cover removal tool is inadvertently fitted to a standard wheel nut, it can only be released by removing the wheel nut. The wheel brace will fit inside the cover removal tool and onto the wheel nut.

Note: After use, store the wheel nut adapter correctly in the tool kit.

REMOVING THE SPARE WHEEL

! Take care when lifting a wheel. Wheels are heavy and can cause injury if not lifted with care.

! Spare wheel securing nuts and road wheel securing nuts are not interchangeable.

! Do not lay a wheel on its face as this could cause scratch damage.

Note: In some markets, a locking wheel nut is used on each alloy wheel. There may also be a locking wheel nut securing the spare wheel.

1. Using the wheel brace from the vehicle tool kit, remove the spare wheel securing nuts.
2. Carefully lift off the wheel and place on the ground.

OPERATING THE JACK

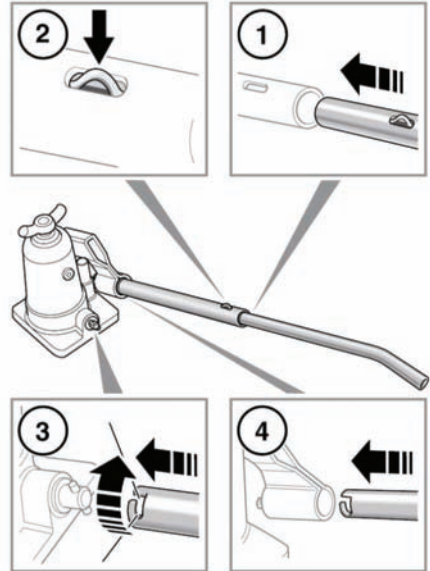
! **WARNING - THAT NO PERSON SHOULD PLACE ANY PORTION OF THEIR BODY UNDER A VEHICLE THAT IS SUPPORTED BY A JACK.**

! Ensure that the jack is not positioned over metal gratings or a manhole cover.

! Ensure that the jack is correctly located onto the vehicle jacking point. Do not use any other position to jack the vehicle.

! Never use the bottle jack from the side of the vehicle.

Before you position the jack under the vehicle, make sure you are familiar with its operation.



E135713

1. Slot the two parts of the jack lever together.
2. Ensure that the spring clip protrudes from the engagement slot.
3. Close the jack release valve by using the notched end of the lever. Slot the lever over the release valve then turn the valve fully clockwise.
4. Insert the lever into the receiver and twist to lock it into position.
5. To raise the jack, pump the lever up and down.
6. To lower the jack, twist and pull out the lever from the receiver. Slot the lever over the release valve then slowly turn the valve counterclockwise. The weight of the vehicle will push the jack down.