



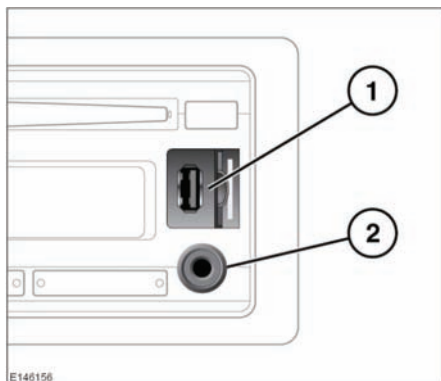


CONNECTING A DEVICE

-  **Make sure that any auxiliary devices are stored securely while the vehicle is in motion.**
-  **Do not place any connected item on the vehicle's seats, carpets, or other upholstery. Some devices can become hot during use and may damage fabric upholstery.**
-  **Do not leave any auxiliary input devices connected while the vehicle is left unattended.**
-  **Read the manufacturer's instructions for any device before it is connected to the vehicle's audio system.**

AUX (Auxiliary Input) mode allows extra equipment to be connected to the vehicle's audio system. Items such as a personal stereo, MP3 player, hand-held navigation unit etc., can be plugged in to the vehicle's audio system.

To listen to a portable media device, first connect the device. Press the **SOURCE** button repeatedly until either **AUXILIARY** or **USB/iPod** is displayed. Play will start.



1. USB/iPod connection.
2. Auxiliary input. This connection uses a standard 3.5mm audio jack.

Note: The volume levels and sound quality available from devices connected to the auxiliary inputs may vary widely. If the connected audio device is equipped with a line out socket as well as a headphone socket, the line out socket should be used.

Note: The maximum shoulder size of any auxiliary input connector should not exceed 8mm. A wider shoulder will prevent good connection.

PAIRING AND CONNECTING USING THE MEDIA PLAYER

The procedure for pairing and connecting a portable media device is identical to the procedure for pairing and connecting a telephone. See **47, PAIRING AND CONNECTING USING THE PHONE**.

SETTING THE CONTROL METHOD

Control of certain iPod/iPhone devices can be switched between the audio system and the device.

1. Press and hold the menu select control for at least two seconds to open the iPod option menu.
2. Select **iPod CONT.**
3. Select either **iPod MODE** or **HU MODE**.
 - **iPod MODE** - use the controls on the iPod/iPhone.
 - **HU MODE** - use the audio system (head unit) controls.

MEDIA SEARCH

An iPod can contain thousands of songs. The audio system's media search facility can assist in finding the desired track.

1. Press the menu select control to active the search mode.