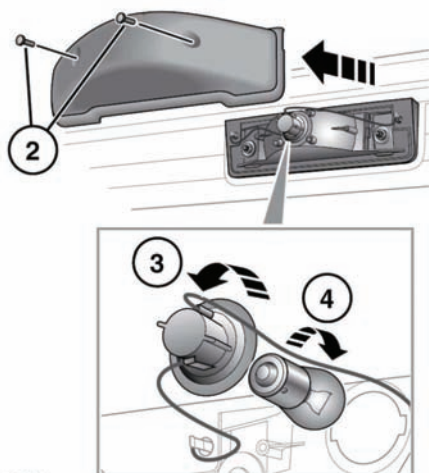


## HIGH LEVEL BRAKE LAMP BULB REPLACEMENT



E135733

1. Open the taildoor.
2. Remove the retaining screws and remove the cover.
3. Turn the bulb holder counterclockwise to remove.
4. Press the bulb into the unit, then turn it and remove.

## LICENSE PLATE LAMP BULB REPLACEMENT



E135734

1. Remove the retaining screw.
2. Remove the cover.
3. Press a bulb into the unit, then turn it and remove.