

- !** Battery electrolyte is both corrosive and toxic and can damage a wide range of materials. Do not allow battery electrolyte to come into contact with fabrics or painted surfaces. Any contaminated surface should be washed down immediately with copious amounts of clean water.

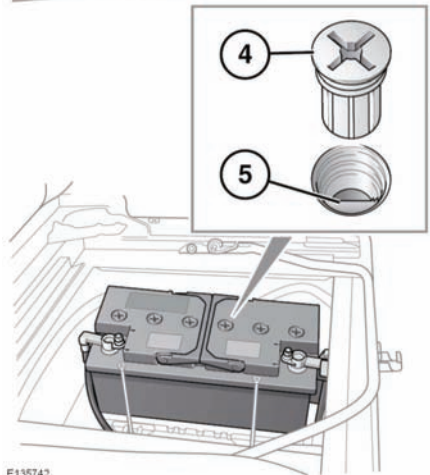
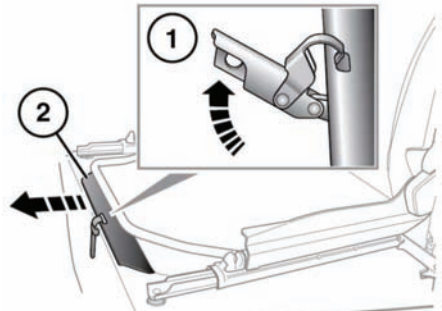
BATTERY ELECTROLYTE LEVEL

Your vehicle is fitted with a low maintenance battery.

In hot climates, frequent checks of the battery electrolyte level and condition are required. If necessary, the battery cells can be topped up using distilled water.

Remove the left hand front seat. See **11**, **FRONT SEAT BASE REMOVAL**.

1. Release the buckle at the front of the battery compartment.
2. Slide the lid forward.
3. Clean off the battery.
4. Unscrew the six cell plugs.
5. Check that the electrolyte is level with the plastic level indicator.
6. If necessary, top up with distilled water. Do not overfill.
7. Refit the cell plugs.
8. Refit the battery lid and seat.



E135742

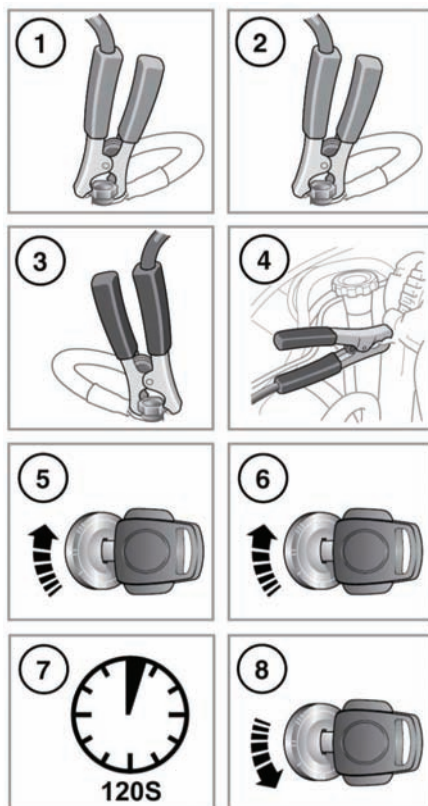
CONNECTING BOOSTER CABLES

Note: Before connecting booster cables ensure that the battery connections on the disabled vehicle are correct, and that all electrical equipment has been switched off.

1. Connect one end of the positive booster cable to the positive terminal (red battery cable) on the donor vehicle's battery.
2. Connect the other end of the positive booster cable to the positive terminal (red battery cable) on the disabled vehicle's battery.

Vehicle battery

3. Connect one end of the negative booster cable to the negative terminal (black battery cable) on the donor vehicle's battery.
4. Connect the other end of the negative booster cable to a suitable earth point on the disabled vehicle. The earth point should be at least 0.5 metres (20 inches) away from the battery, and as far as possible from any fuel or brake pipes.
 - Check that all cables are clear of any moving components, and that all four connections are secure.
5. Start the engine of the donor vehicle, and allow it to idle for a few minutes.
6. Start the engine of the disabled vehicle.
7. Allow both vehicles to idle for two minutes.
8. Switch off the donor vehicle.



E135743