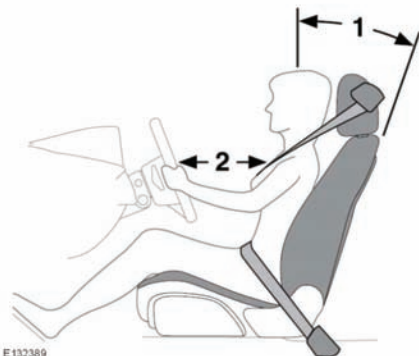


SITTING IN THE CORRECT POSITION



E132389



Do not adjust the seat while the vehicle is moving. Doing so could cause loss of vehicle control and personal injury.

The seat, head restraint and seatbelt contribute to the protection of the user. Correct use of these components will give you greater protection, therefore you should observe the following points:

1. Sit in an upright position with the base of your spine as far back as possible and the seatback reclined no more than 30 degrees.
2. Do not move the driver's seat too close to the steering wheel. Ideally, a minimum distance of 254 mm (10 inches) is recommended between the breastbone and the steering wheel. Hold the steering wheel in the correct position with your arms slightly bent.
- Adjust the head restraint so that the top of the head restraint is above the centre line of the head. See **16, HEAD RESTRAINT ADJUSTMENT**.

- Position the seatbelt so that it is mid-way between your neck and your shoulder. Fit the strap tightly across your hips, not across your stomach.

FRONT SEAT BASE REMOVAL

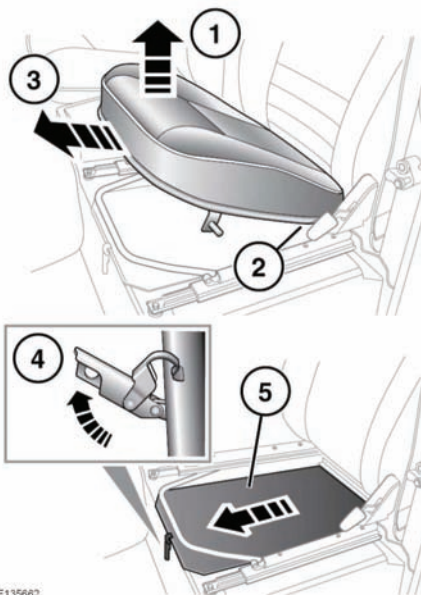
It is necessary to remove the front seat bases to access the following:

- Right side seat
 - Vehicle battery
 - Wheel change tool kit
- Left side seat
 - Secondary fuse box



On vehicles equipped with heated front seats, extra care must be taken when removing the seat base to avoid strain or damage to the electrical connections. If necessary, disconnect the lead from the seat base.

Remove a seat base as follows:



E135662