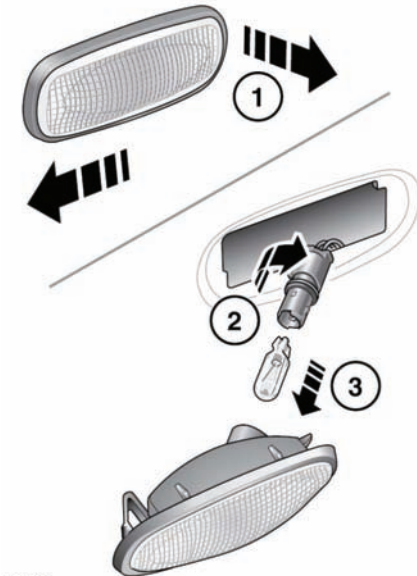


SIDE REPEATER LAMP BULB REPLACEMENT

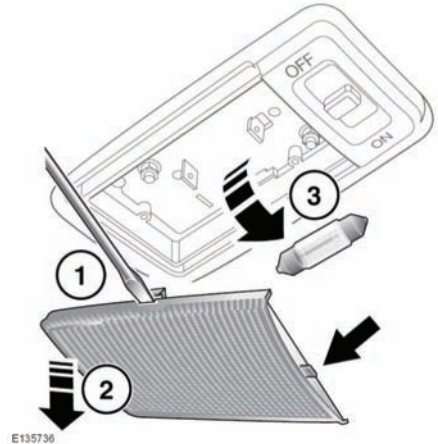


E135735

1. Slide the lens forward, lift the rear edge then remove the unit.
2. Rotate the bulb holder and remove from the lamp unit.
3. Pull the bulb out of the holder.

When refitting, ensure that the tab on the lamp unit is inserted into the aperture first, before pushing into position in the wing.

INTERIOR LAMP BULB REPLACEMENT



E135736

1. Insert a small flat bladed screwdriver into the indent at the side of the lens.
2. Carefully prise the lens from the lamp unit.
3. Remove the bulb.

When refitting, ensure that the tab (arrowed) is inserted first before pushing into position.

PARTS AND ACCESSORIES



The fitting of non-approved parts and accessories, or the carrying out of non-approved alterations or conversions, may be dangerous and could affect the safety of the vehicle and occupants and also invalidate the terms and conditions of the vehicle warranty.



Land Rover will not accept any liability for death, personal injury or damage to property which may occur as a direct result of fitment of non-approved accessories or the carrying out of non-approved conversions to Land Rover vehicles.