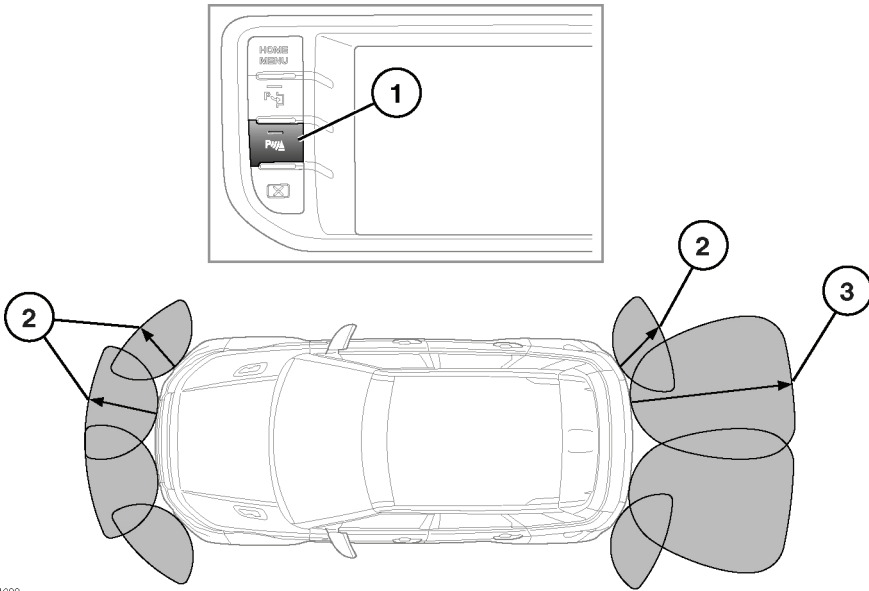


PARKING AIDS OPERATION



SL1699

1. Parking aid on/off switch. The switch indicator will illuminate.
When reverse gear is selected, the front and rear parking sensors are activated automatically.
To turn off, press the button. The indicator will extinguish.
2. Approximate sensor range -600mm (24in).
3. Approximate sensor range -1500mm (60in).



It remains the driver's responsibility to detect obstacles and estimate the vehicle's distance from them. Some overhanging objects, barriers, chain link fences, small children, animals, thin obstructions or painted surfaces may not be detected by the system.



Systems using the same frequency band as the front parking sensors, may cause irregular tones to be emitted.

Front sensors will remain active as long as the vehicle's speed does not exceed 16km/h (10mph).

With automatic transmission, selecting **N** from **R** will keep front and rear sensors active.

When objects are detected, the parking aid emits a warning tone which increases in frequency as the vehicle gets closer to the object and then becomes constant when the obstacle is within 300mm (12in).

Note: The front parking aid provides an audible proximity warning when driving forwards and when reversing.