

ELECTRONIC BRAKE FORCE DISTRIBUTION (EBD)

EBD controls the balance of braking forces supplied to the front and rear wheels, in order to maintain maximum braking efficiency.

If the vehicle has a light load (only the driver in the vehicle for example), EBD will reduce the braking force applied to the rear wheels. If the vehicle is heavily laden, EBD will allow greater braking force to the rear wheels.



The red brake warning lamp illuminates briefly when the ignition is turned on.

A fault with the EBD system is indicated by the red brake warning indicator illuminating and an associated warning message. Gently and safely stop the vehicle and seek qualified assistance.

ELECTRIC PARKING BRAKE (EPB)



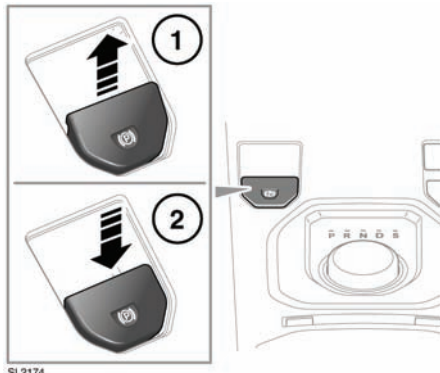
The parking brake operates on the rear wheels. Therefore, secure parking of the vehicle is dependent on being on a hard and stable surface.



Do not rely on the parking brake to operate effectively, if the rear wheels have been immersed in mud or water.

Note: If the vehicle is used in severe off-road conditions (e.g. wading, deep mud, etc.), additional maintenance and adjustment of the parking brake will be required. Consult your Land Rover Dealer/Authorised Repairer.

EPB MANUAL USE



SL2174

1. To apply the parking brake while the ignition is on or off, with the vehicle stationary pull up the lever and release it.



The parking brake warning lamp will illuminate continuously while the ignition remains on and for ten seconds after the ignition is turned off. It is important to confirm that the lamp is continuously illuminated (not flashing), as this indicates the brake has been correctly applied.

If the lever is operated while the vehicle is still moving and speed is less than 3km/h (2mph) the vehicle will be brought to an abrupt stop. The stop lamps will not be illuminated.

If a fault is detected the warning lamp will flash and a **PARKBRAKE** message will be displayed in the message centre.

2. To release the parking brake, with the ignition on, press the brake pedal then press down on the EPB lever. The parking brake warning lamp will extinguish.