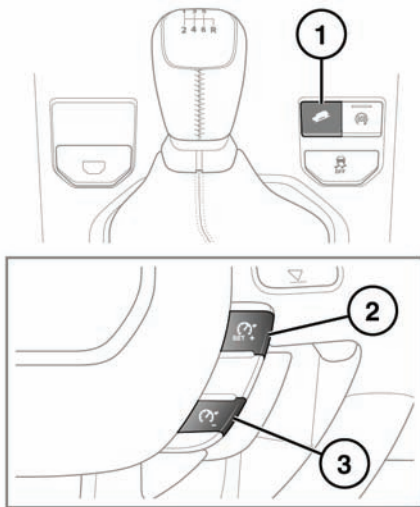


HDC CONTROLS



1. Press to switch HDC on and off.
2. Press to increase the set speed.
3. Press to decrease the set speed.

Manual transmission: HDC can be used in 1st, 2nd or reverse gears.

Automatic transmission: HDC can be used in **D**, **R** and CommandShift **1**, **2** or **3**.

Note: *HDC is automatically selected by some of the Terrain Response special programs.*

HDC can be selected at speeds above 80km/h (50mph) but will not engage until vehicle speed drops below 50 km/h (30 mph). The HDC warning lamp will flash while vehicle speed is above 50 km/h (30 mph).

The green warning lamp in the message centre will illuminate while HDC is active.

A green graphic will also be displayed in the message centre showing the HDC target speed. When HDC is unable to operate, the display will be grey. The graphic indicates the range of target speeds available in the currently selected gear. Target speed is adjusted via the cruise control switches.

If HDC is deselected while operating, the green warning lamp will flash and the system will fade out, allowing vehicle speed to gradually increase.

Note: *HDC is automatically deselected if the ignition is switched off for more than six hours.*

HDC OPERATION

With HDC engaged, standard descent speed will not exceed 20 km/h (12 mph).

While the green warning lamp is continuously illuminated, HDC target speed can be modified using the cruise control steering wheel switches, as follows:

- To increase speed, press and hold switch **(2)** until the green pointer in the target speed display is at the desired speed.
- To decrease speed, press and hold switch **(3)** until the green pointer in the target speed display is at the desired speed.

Release the switch to set the target speed.

Note: *The white needle indicates the current vehicle speed.*

To increase or decrease speed gradually, tap switches **(2)** and **(3)** as required. Each tap of the switch will increase/decrease the speed in increments/decrements of 1 km/h (0.5 mph).

Note: *If a new target speed is set and then reverse gear is selected, the target speed will change to the default reverse speed. When a forward gear is next selected, the new target speed is reinstated.*