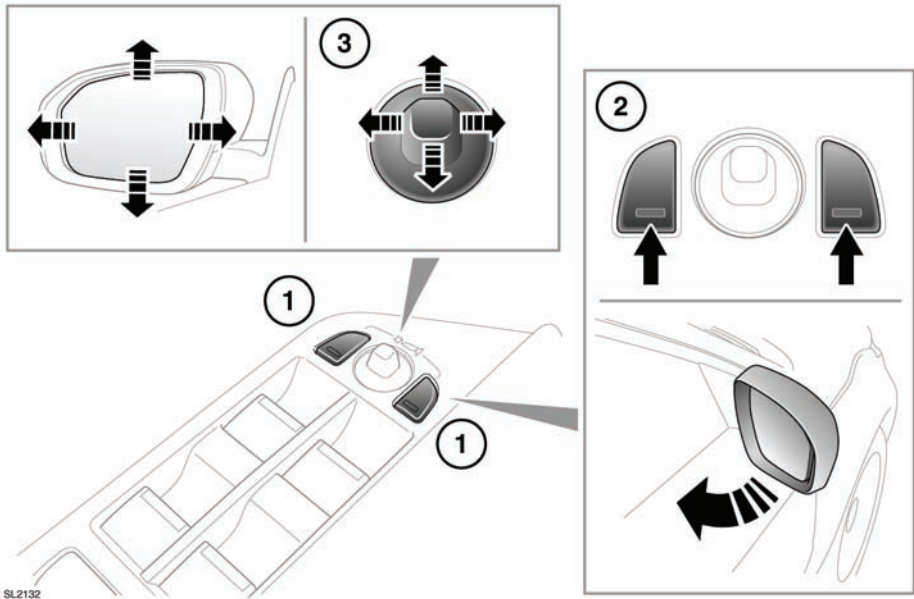


EXTERIOR MIRRORS



1. Mirror selector switches. Press to select the left or right mirror.
2. Press both selector switches together to fold/unfold the mirrors (power fold option).
3. Mirror adjustment switch. Move up/down/left or right to adjust the mirror glass position.

The mirrors can be adjusted and folded when the ignition is on and for up to five minutes after the ignition is switched off, provided the driver's door is not opened.

Note: Powerfold will operate only if vehicle speed is below 113km/h (70 mph).

Note: The rear view door mirror heaters operate automatically according to the external temperature and windscreen wiper operation.

Note: An amount of knock protection is designed into the door mirrors. If a mirror is accidentally knocked inwards or manually folded inwards, the mirror head will be disengaged from the folding mechanism. To re-engage the mechanism, fold then unfold the mirror using the switch.

Note: A thermal cut-out will temporarily disable the powerfold feature if the switches are operated repeatedly.