

SWITCHING OFF THE ENGINE

Before switching off the engine, ensure that the vehicle is parked safely with the parking brake applied.

1. Select **P** for automatic transmission, or neutral for manual transmissions.

Note: If any other gear is selected at switch off, the rotary selector will automatically move to **P** before retracting into the centre console.

2. Press the **START/STOP** button.

Note: The parking brake will apply automatically if it has not already been applied.

SWITCHING OFF THE ENGINE WHILE MOVING



It is not advisable to switch off the engine while the vehicle is moving. However, should such a situation arise, then the following procedure applies.

- Press and hold the engine **START/STOP** button for 2 seconds, or;
- Press the engine **START/STOP** button twice within 2 seconds.

In either case, the warning **Engine Stop Button Pressed** will be displayed in the message centre.

ROLLING RE-START

If the engine is switched off while the vehicle is moving, a rolling re-start can be initiated.

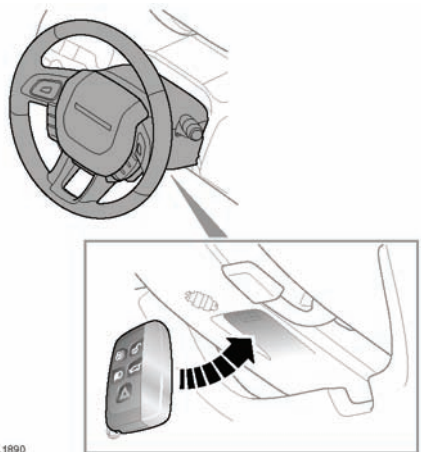
Automatic transmission - select neutral (**N**) and then press the engine **START/STOP** button. When the engine re-starts, select transmission position **D**.

Manual transmission - depress the clutch and then press the engine **START/STOP** button. When the engine re-starts, select an appropriate forward gear.

KEYLESS START BACKUP

If the vehicle has been unlocked using the emergency key blade or the Smart Key is not detected by the vehicle, it will be necessary to use the keyless start backup to disarm the alarm and start the engine.

The keyless start backup can only be used when the message **Smart Key Not Found Refer to Handbook** is displayed in the message centre.



SL 1890

Position the Smart Key against the underside of the steering column cover with the buttons facing downwards.

With the brake (Auto) or clutch (Man) pedal depressed, press and release the **START/STOP** button to start the engine.

When the engine starts, you no longer need to hold the Smart Key beneath the steering column.