




WHEEL CHANGING SAFETY

Before raising the vehicle or changing a wheel, ensure that you read and comply with the following warnings.

-  **Always find a safe place to stop, off the highway and away from traffic.**
-  **Ensure that the vehicle is on firm level ground.**
-  **Apply the parking brake. Engage Park (P) on automatic vehicles, select 1st or reverse gear on manual vehicles.**



Switch on the hazard warning lamps.



Ensure that the front wheels are in the straight ahead position and engage the steering lock.



Disconnect trailer/caravan from vehicle.

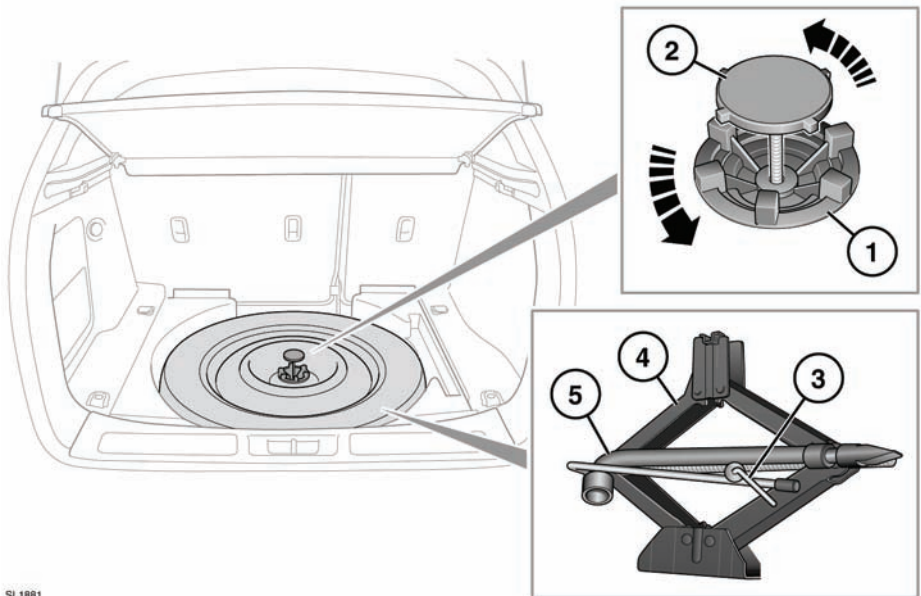


Ensure that all passengers, and animals, are out of the vehicle and in a safe place away from the highway.



Place a warning triangle at a suitable distance behind the vehicle, facing towards oncoming traffic.

TOOL KIT



SL1981

1. Temporary spare wheel locking ring.
2. Temporary spare wheel retaining bolt.
3. Tool kit retaining bolt.
4. Jack.

5. Wheel brace.



After use, the tool kit should be returned to the storage area and correctly stowed.