

Standard audio

The Health Industry Manufacturers' Association recommends that a minimum separation of 15 centimetres (6 inches) is maintained between a wireless phone antenna and a pacemaker, to avoid potential interference with the pacemaker. These recommendations are consistent with the independent research by, and recommendations of, Wireless Technology Research.

BLUETOOTH® INFORMATION



Bluetooth® is the name for short-range radio frequency (RF) technology that allows electronic devices to communicate wirelessly with each other.

The Land Rover Bluetooth® system supports Bluetooth® Hands-Free Profile (HFP), Advanced Audio Distribution Profile (A2DP) and Audio Video Remote Control Profile (AVRCP).

Note: HFP and A2DP/AVRCP profiles can be connected independently, so a phone can be connected via one, while a media device can be connected via the other, at the same time.

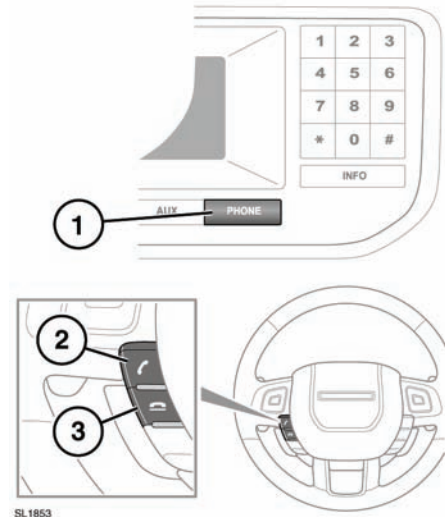
Before making use of the vehicle's Bluetooth phone system, your Bluetooth phone must be paired and connected to the vehicle system. This is done via your mobile phone.

See **PAIRING AND CONNECTING USING THE MOBILE PHONE** (page 177).

Each time the ignition is switched on the system will attempt to connect with the last connected phone.

As mobile phones have a wide range of audio and echo characteristics, it may take a few seconds for the vehicle system to adapt and deliver optimum audio performance. To achieve this, it may be necessary to reduce the in-vehicle volume and ventilation fan speed slightly.

STANDARD TELEPHONE CONTROLS



1. Press to activate or deactivate telephone mode.
2. Press to answer a call or to dial a number.
3. Press to end a call or to reject an incoming call.