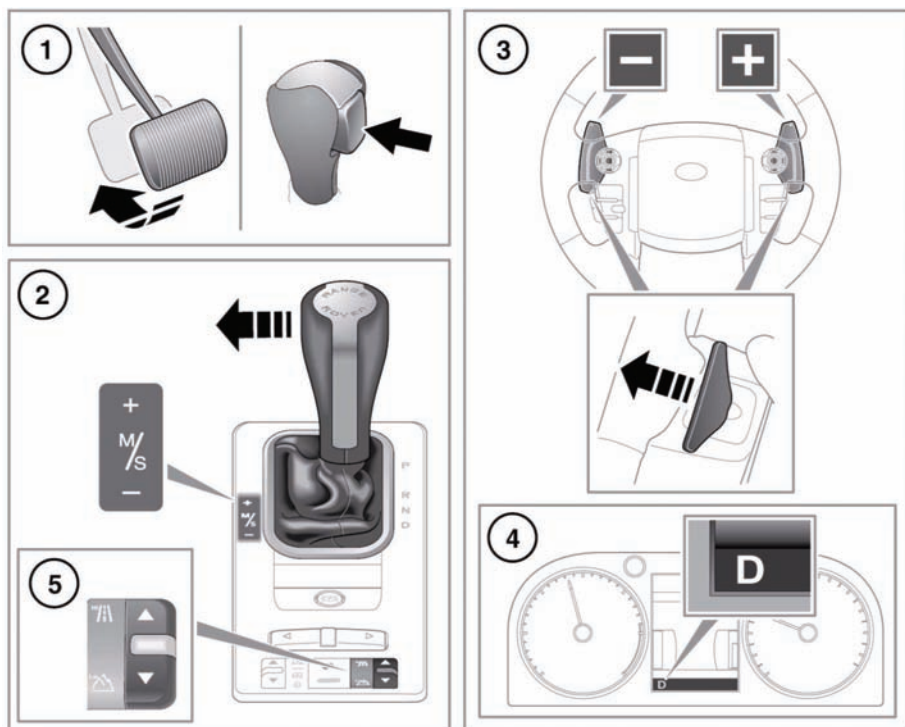


## AUTOMATIC TRANSMISSION



E142306

1. To select Drive (**D**) when the vehicle is stationary, first apply the brake pedal.

**Note:** If pressure is applied to the selector lever before the foot brake is applied, any gear selected may not be available, irrespective of the lever position. In this situation, remove pressure from the selector lever, ensure that the foot brake is applied and select the required gear.

2. To select Sport mode, move the gear selector to the left. **S** will appear in the gear selector display and the LED to the side of the gear selector illuminates.

To use CommandShift™, first select Sport mode, then move the selector lever forward to move up a gear, and back to move down gear.

To return to automatic mode, move the lever back to the **D** position (**D** is displayed as confirmation).

3. Gear shift paddles: Pull the left paddle for downshifts and the right paddle for upshifts.

**Note:** If the gear selector is in the **D** position, the transmission will revert to automatic operation after a short period of driving at a steady speed.