

THE NAVIGATION SYSTEM

Navigation instruction is by map and turn information displayed on the touch screen and can be complemented by voice guidance if required. A detailed intersection map is also displayed in the instrument panel. The system uses signals from Global Positioning System (GPS) satellites combined with information from vehicle sensors and from data stored on the hard drive, to establish the true vehicle position.

Note: Mapping data loaded on the hard drive is relevant to the market in which the vehicle is first sold and will provide guidance and information only for that area. Your local Land Rover Retailer/Authorized Repairer will have details of software updates.

Using this combination of data sources the vehicle navigation computer enables you to plan and follow a route map to your desired destination.

The touch screen is used to control navigation via menus, text screens and map displays.

The requirements of national Road Traffic Regulations always apply.

Observation of traffic signs and local traffic regulations always take priority.

The navigation system serves solely as an aid to navigation. In particular, the navigation system cannot be used as an aid to orientation when visibility is poor.

GPS signals may occasionally be interrupted due to physical barriers such as tunnels and roads under raised highways.

However, direction and speed sensors on the vehicle will minimise any adverse effect on the navigation system. Normal operation will resume once the obstruction has been passed.

Under certain conditions it is possible for the vehicle position shown on screen to be incorrect. This may happen when:

- Driving on a spiral ramp in a building.
- Driving on or beneath elevated roads.
- Two roads are close and parallel.
- The vehicle is transported to another destination.
- After the vehicle is rotated on a turntable.
- After vehicle battery disconnection.

USING THE NAVIGATION SYSTEM

WARNING

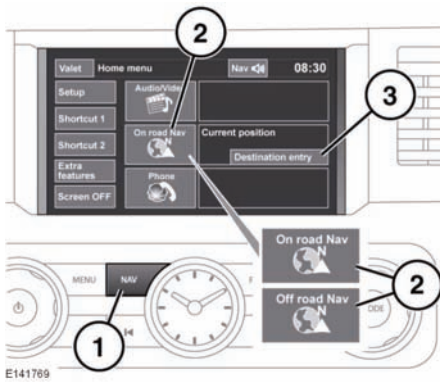
In the interests of safety, only operate, adjust or view the system when it is safe to do so.

WARNING

The navigation system is not a substitute for driving safely, with due care and attention. Drivers should not assume that a feature will correct errors in judgement in driving. The navigation system may not function properly in all circumstances.

WARNING

Do not allow the system to distract the driver while the vehicle is moving. Driver distraction can lead to accidents causing serious injury or death.



1. **NAV** shortcut button, press for navigation.
2. **Navigation** soft key, touch for **On road** or **Off road** navigation.
3. **Destination entry**. Touch for destination entry menu.

Note: On vehicles with off-road navigation, the soft key includes **On road** or **Off road**, to show the current Navigation mode. See **149**, **OFF-ROAD NAVIGATION**.

If the navigation screen language has not been set, select **Language**, and touch **OK** to confirm. The **CAUTION** screen will return.

After touching **Agree**, the touch screen will display the previously displayed map view. This will show the current vehicle position. Touch the **Nav menu** soft key to display the main menu screen.

At this point, the first time user should set up personal preferences in the **Nav set-up** area. These settings are applied whenever navigation is used.