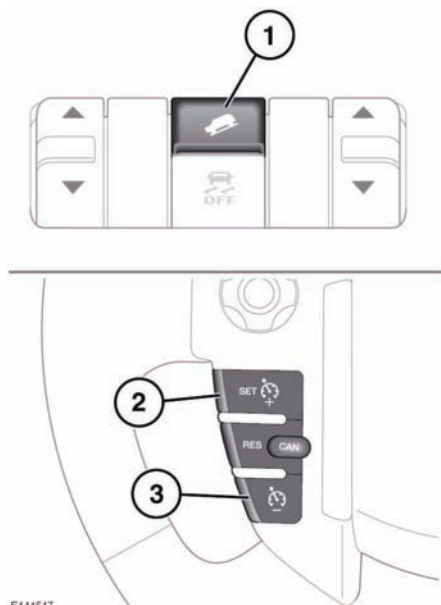


## HDC CONTROLS



E141517



**Do not attempt a steep descent if HDC is inoperative or warning messages are displayed.**

### 1. HDC on/off.

HDC can be selected at speeds below 80 km/h (50 mph). HDC can be used in **D**, **R** or CommandShift **1** when in high range and in **D**, **R** and all CommandShift gears when in **Lo** range. When in **D**, the vehicle will select the most appropriate gear.

**Note:** HDC is automatically selected by some of the Terrain response special programmes.

If the system operation criteria have not been met, the HDC warning lamp will flash to indicate that the system has been selected but it not operating. See **55, HILL DESCENT CONTROL (GREEN)**.

If HDC is deselected while operating, the lamp will flash and the system will fade out, allowing the vehicle speed to gradually increase.

If the vehicle speed exceeds 80 km/h (50 mph) HDC will disengage, and the HDC lamp will extinguish.

Depressing the brake pedal will cancel HDC operation. If HDC is switched off via the brake pedal, HDC assistance will fade out gradually to avoid loss of control of the vehicle.

**Note:** HDC is automatically deselected if the ignition is switched off for more than 6 hours.

### 2. Increase the descent speed.

**Note:** Vehicle speed will only increase on a slope steep enough to increase momentum. Use of the **+** switch may therefore not increase vehicle speed on a gentle slope.