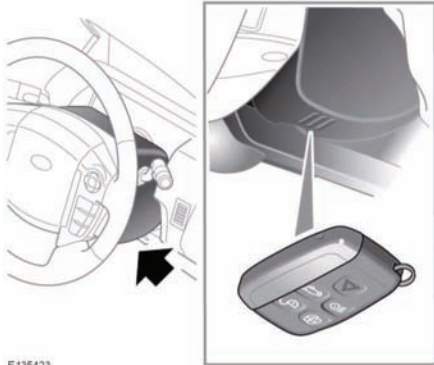


Starting the engine

The keyless start backup can only be used when the message **Smart Key Not Found - Refer to Handbook** is displayed in the Driver information centre.



E 135423

1. Position the Smart Key flat against the side of the steering column with the buttons facing outwards.

Note: The steering column has markings on the side to aid placement of the Smart Key.

2. Firmly depress the brake pedal.
3. Press and release the engine **START/STOP** button.

Once the engine has started, the brake pedal can be released if it is safe to do so.

If the Smart Key is not recognised, or the engine still fails to start, consult a Land Rover Dealer/Authorised Repairer.

IF THE ENGINE FAILS TO START

Note: If the engine fails to crank when the engine **START/STOP** button is pressed and there has been a recent collision, the fuel system inertia switch may have been tripped. Seek qualified assistance.

Note: The following information applies to petrol engined vehicles only.

If the engine persistently fails to start.

1. Ensure the brake pedal is not depressed and that a valid Smart Key is inside the vehicle.
2. Ensure that Park (**P**) or Neutral (**N**) is selected.
3. Press and hold the engine **START/STOP** button until the warning lamps illuminate.
4. Slowly depress the accelerator pedal fully and hold it in the fully depressed position.
5. Press and release the engine **START/STOP** button. The engine will begin to crank.
6. Release the accelerator pedal when the engine starts.

Once the engine has started, the brake pedal can be released if it is safe to do so.

If the engine still fails to start, or fails to crank, consult a Land Rover Dealer/Authorised Repairer.