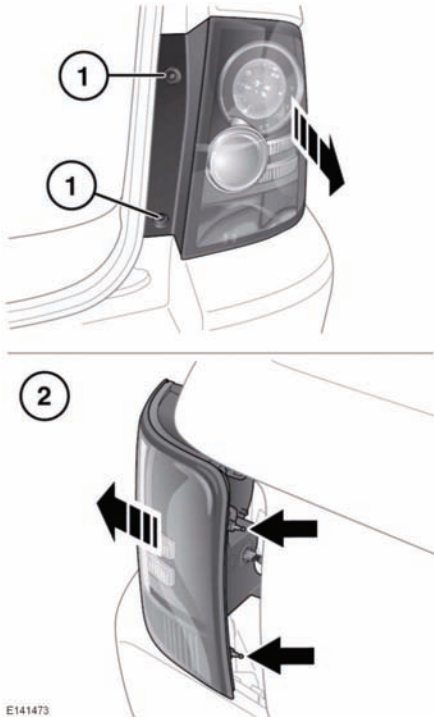


REAR LAMP REMOVAL

To change any of the rear bulbs, it is necessary to completely remove the lamp unit from the vehicle.

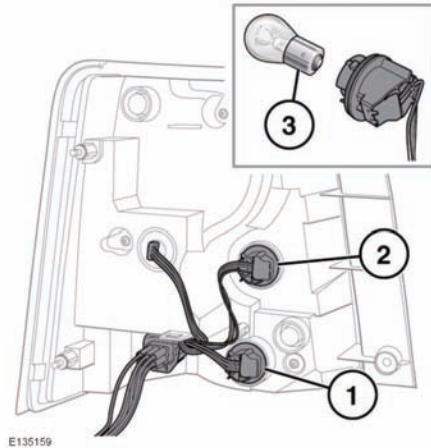


E141473

1. With the tailgate open, remove the 2 screws from the inner edge of the unit.
2. Firmly but carefully pull the unit away from the vehicle, releasing the 2 lugs situated at the rear of the lamp unit.
3. Disconnect the electrical connector and remove the unit from the vehicle. Place face down on a flat surface covered in soft material to prevent damage.

REAR LAMP BULB REPLACEMENT

Note: The direction indicator lamp, stop lamp, and tail lamp are LED units, and cannot be serviced.



E135159

1. Rear fog lamp.
2. Reversing lamp
3. Twist the relevant bulb unit and pull to access the bulb. Push, twist and pull to remove the bulb.