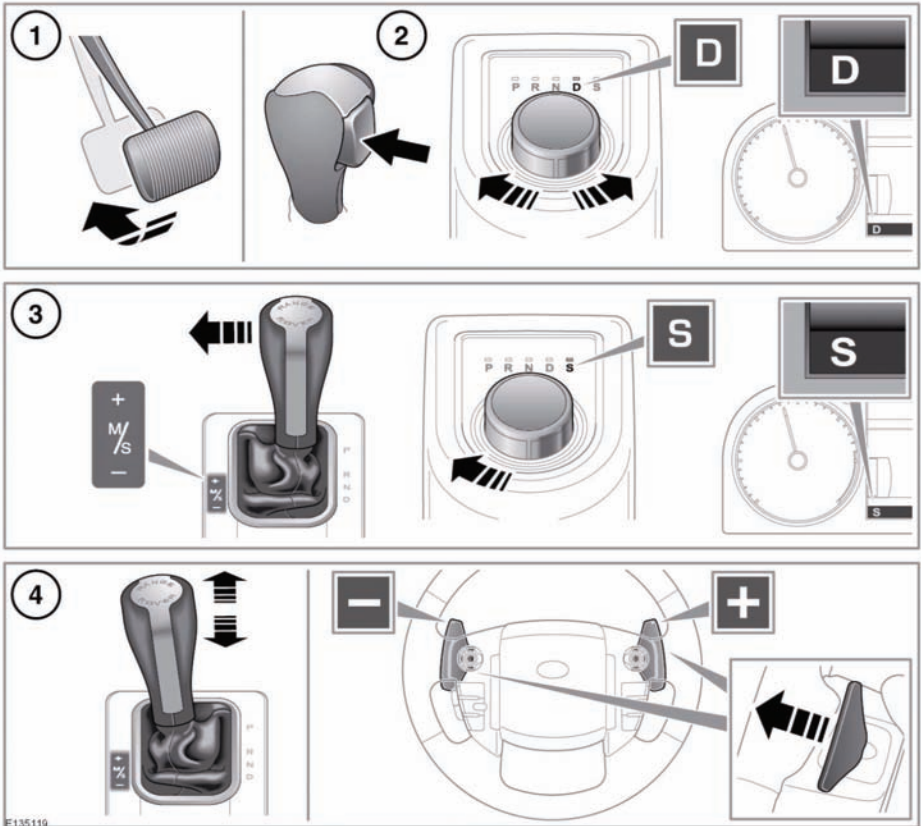


AUTOMATIC TRANSMISSION



1. To select Drive (**D**) when the vehicle is stationary, first apply the brake pedal.
2. With the selector lever, press in the release button and move the lever to **D**. If pressure is applied to the selector before the foot brake is applied, the selected gear may not be available. In this situation, remove pressure from the selector lever, ensure that the foot brake is applied and select the required gear as described.

With the rotary selector, rotate to **D**. The paddle shifts can be used in this mode. Gear selection will revert to fully automatic if use of the paddles is not maintained.

D will appear in the instrument panel and the LED by the selector will illuminate.

3. To select sport mode with the selector lever, move the lever to the left. With the rotary selector, press the selector down and rotate to **S**. **S** will appear in the instrument panel and the LED by the selector will illuminate.