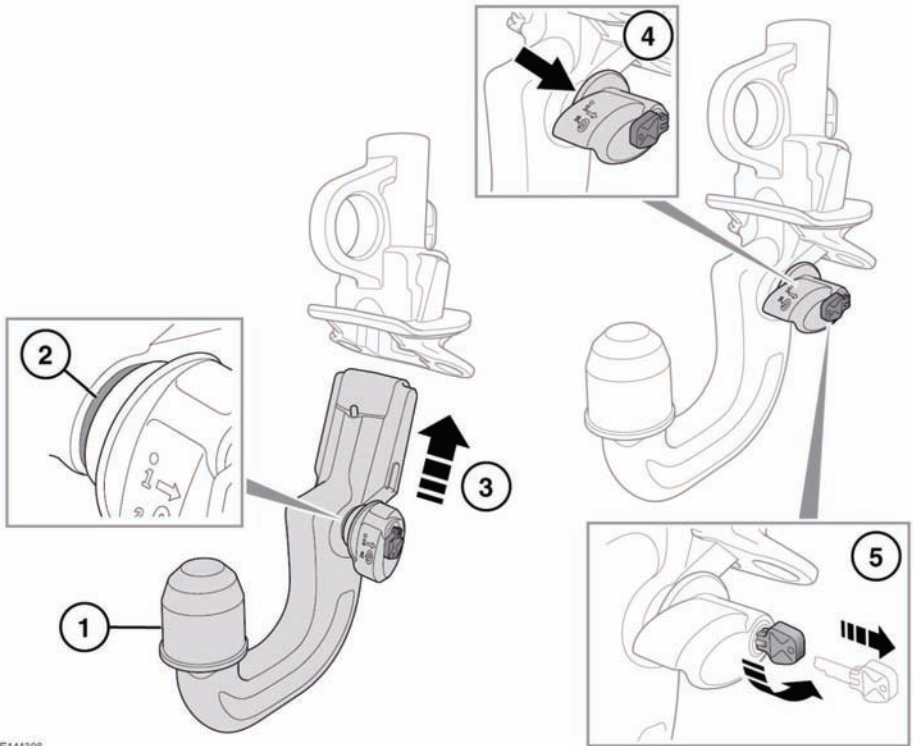


FITTING THE DETACHABLE TOW BALL



E141398

1. Remove the protective cover from the tow ball and stow it in the tow ball stowage area.
2. The tow ball can only be installed when the green locking lever is in the unlocked position and the red marker visible.
3. Insert the tow ball into the mounting and push firmly upwards until the tow ball locks into position.
The tow ball mounting is located behind a removal panel in the lower rear bumper. See **211, REAR TOWING POINT**.
4. The red marker must be completely covered by the green locking lever.

5. Turn the key counterclockwise to lock the tow ball and remove the key before towing.

REMOVING THE DETACHABLE TOW BALL

Removal of the tow ball is the reverse of fitting.

Note: The key cannot be removed when the tow ball has been detached.