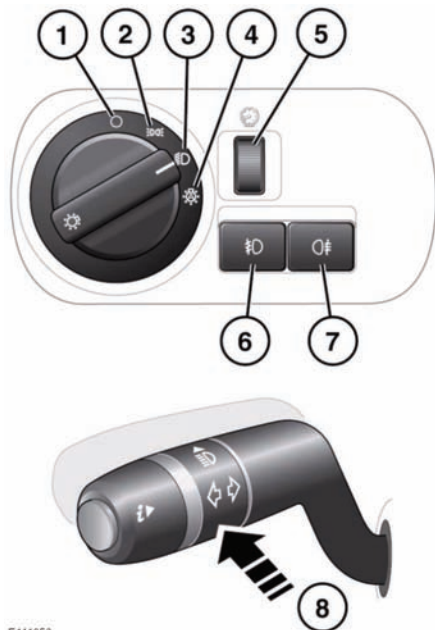


LIGHTING CONTROL



1. Headlamps/side lamps off.
2. Side lamps on.
3. Low beam headlamps on.
4. Autolamps on: With the switch in this position and the ignition on, the side lamps, low beam headlamps and licence plate lamps illuminate automatically when the ambient light level is low. Auto high beam and Headlamp courtesy delay may also be activated (see below).
5. Dimmer control.
6. Rear fog lamps on/off: When the rear fog lamps are on, the rear fog lamp warning lamp will illuminate.
7. Front fog lamps on/off: When the front fog lamps are on, the front fog lamp warning lamp will illuminate.

8. High beam on/off/flash: When low beam headlamps are switched on, push the indicator stalk to change to high beam (the high beam warning lamp will illuminate).

To flash the headlamps at anytime, briefly pull the indicator stalk and release it.

Note: Do not use high beam where it may dazzle other road users.

DAYLIGHT RUNNING LAMPS

With the main lighting control in the Off position (1), low beam headlamps, side lamps, tail, license plate lamps and, where fitted, side marker lamps, will switch on automatically under the following conditions:

- The ignition is on.
- The gear selector is out of park.
- The parking brake is not applied (is released) - market dependent.



Unless required or prohibited by law, daylight running lamps can be disabled or enabled by your Dealer/Authorised Repairer.

HEADLAMP COURTESY DELAY

This feature operates whenever the lamps master switch is left in the Auto position, and the ignition is turned off. The headlamps will remain illuminated for up to 240 seconds.

Note: The time delay may be changed using the Touch screen, via the **Vehicle set-up menu** (see **51, INTERACTIVE CONTROLS**).