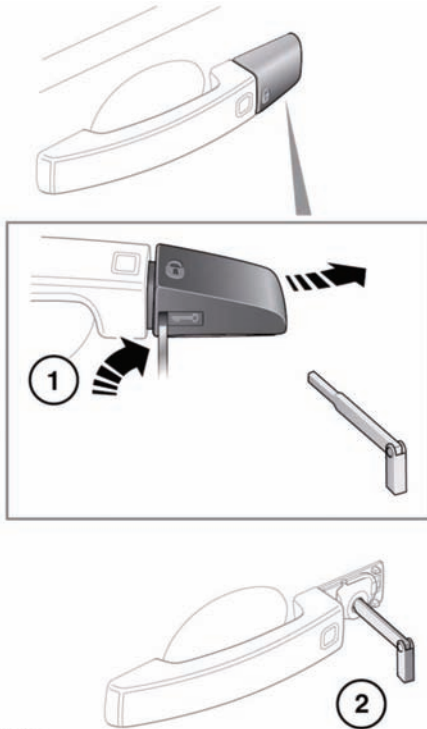


Entering the vehicle



E141316

1. Insert the key blade into the slot at the base of the door lock cover and gently lever the key blade upwards.

Carefully twist the key blade, to lever the cover off the retaining clips.

2. Insert the key blade into the exposed lock to operate.

If the vehicle is unlocked using the emergency key blade with the security system armed, the alarm will sound when the door is unlocked. The alarm will continue to sound until the remote key fob is positioned correctly. See **76, IF THE ENGINE FAILS TO START.**

GLOBAL OPENING

Press and hold the unlock button for 3 seconds to unlock the vehicle and open all windows.

To cancel global opening, press any of the buttons on the Smart Key or operate the driver's window switch. To stop a particular window opening, operate the relevant window switch.

This feature can be enabled/disabled via the **Vehicle set-up** menu (see **51, INTERACTIVE CONTROLS**).

KEYLESS ENTRY



Any person fitted with an implanted medical device should ensure that the device is kept at a distance of at least 22 cm (8.7 inches) away from any transmitter mounted in the vehicle. This is to avoid any possibility of interference between the system and device. For information concerning the locations of the security system transmitters, see 188, REMOTE KEY FOB TRANSMITTER LOCATIONS.



If a remote control is lost, a replacement can be obtained and programmed to the vehicle by a Land Rover Dealer/Authorised Repairer. Notify a Land Rover Dealer/Authorised Repairer as soon as a remote control is lost or stolen and have the remaining remote control(s) reprogrammed.



The Smart Key may not be detected if it is placed within a metal container or if it is shielded by a device with a back-lit LCD screen, such as a smart phone, laptop (including laptop bag), games console, etc. Keep the Smart Key clear of such devices when attempting Keyless entry or Keyless starting.