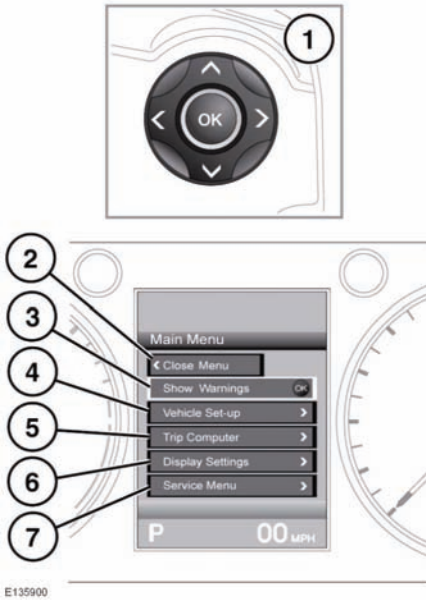


## INTERACTIVE CONTROLS



A number of vehicle features and display settings may be configured via the instrument panel menu.

To display and navigate through the instrument panel menu, operate the menu control on the steering wheel.

1. Steering wheel menu control.
2. Close and return to main menu.
3. Show any warning messages.
4. Access the vehicle set-up menu.
5. Access the trip computer menu.
6. Access the display settings menu.
7. Access the vehicle service menu.