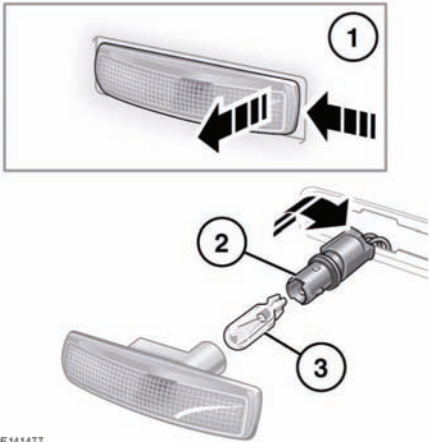


SIDE REPEATER LAMP BULB REPLACEMENT

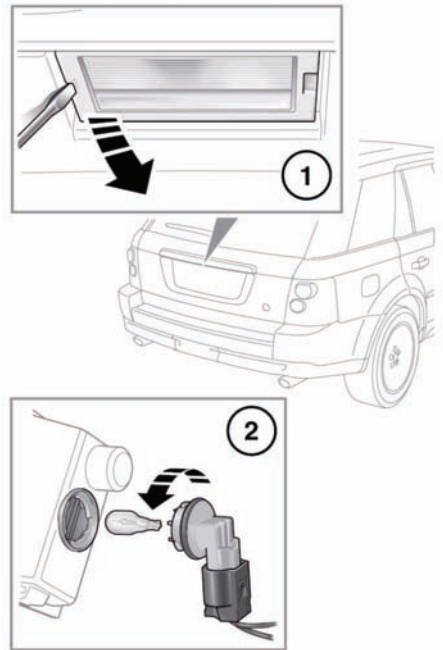


E141477

Follow the steps illustrated. Insert a new bulb and refit the components.

1. Push and release.
2. Rotate the bulb holder anticlockwise to unlock then pull to remove.
3. Pull out the bulb to remove.

LICENSE PLATE LAMP BULB REPLACEMENT



E135160

1. Using a small flat-bladed screwdriver, carefully prise the lamp from the tailgate.
2. Rotate the bulb holder anticlockwise to unlock then pull to remove. Pull out the bulb to remove.