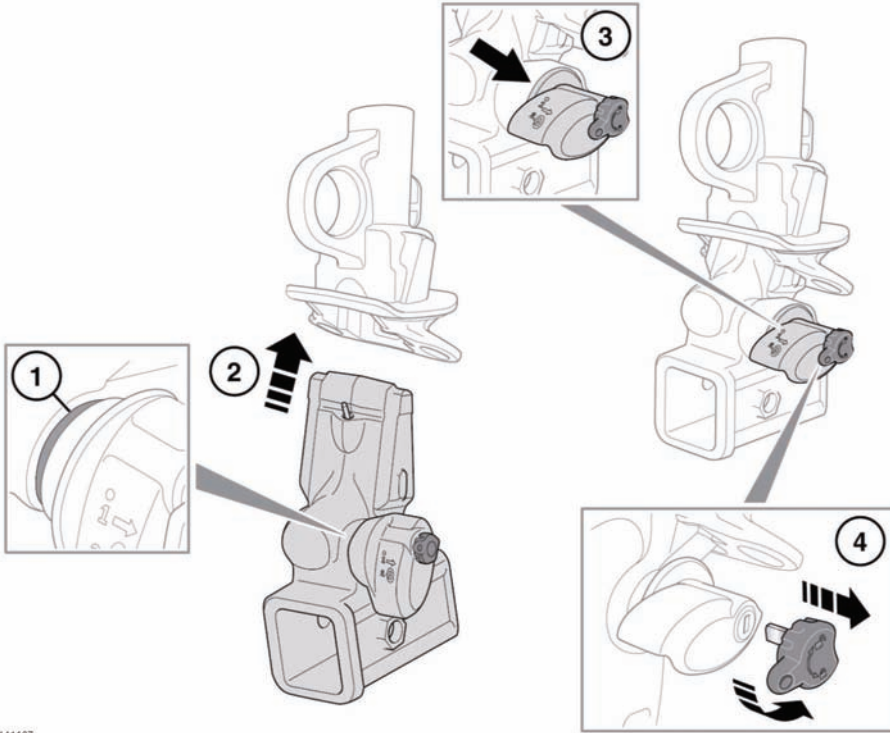


## FITTING THE DETACHABLE DRAWBAR RECEIVER (Australia only)



E141407

1. The receiver can be installed only when the green locking lever is in the unlocked position.
2. Insert the receiver into the vehicle mounting and push firmly upwards until it locks into position.

The receiver mounting is located behind a removal panel in the lower rear bumper. See **211, REAR TOWING POINT**.

3. The red marker must be completely covered by the green locking lever.
4. Unfold the key and turn it anticlockwise to lock the receiver, before inserting a drawbar. Remove the key and store in a safe place.

### REMOVING THE DETACHABLE DRAWBAR RECEIVER

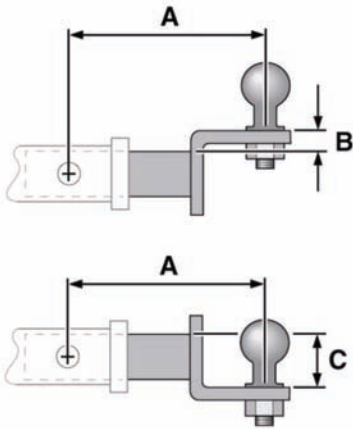
Removal of the drawbar receiver is the reverse of fitting.

**Note:** The key cannot be removed when the drawbar receiver has been detached.

### TRAILER HITCH (Australia only)

The optional trailer hitch (drawbar) receiver is rated as a Class III.

When selecting a drawbar for the receiver, the following dimensions must be adhered to:



E134931

- A.** The maximum recommended drawbar length is 152 mm (6 in.).
- B.** To achieve the maximum ball height, a drawbar with a rise of 25.4 mm (1 in.) is recommended.
- C.** To achieve the minimum ball height, a drawbar with a drop of 60 mm (2 3/8 in.) is recommended.

Consult your Land Rover Dealer/Authorised Repairer for the latest information.