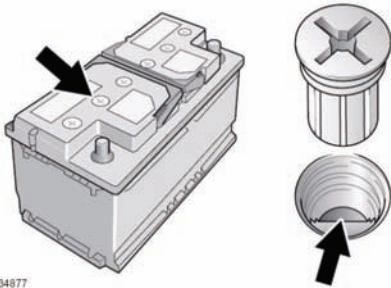


Vehicle battery

Your vehicle is fitted with a low maintenance battery.


In hot climates more frequent checks of the battery electrolyte level and condition are required. If necessary, the battery cells can be topped up using distilled water.





E134877


Unscrew the six cell plugs and store carefully. Check that the surface of the liquid (electrolyte) is level with the plastic level indicator. If necessary, top up with distilled water, but never overfill. Refit the six cell plugs.


CONNECTING JUMP LEADS


 **Rotating parts of the engine can cause serious injury. Take extreme care when working near rotating parts of the engine.**


 **Before attempting to start the disabled vehicle, make sure that the parking brake is applied, or suitably chock the wheels. Make sure that Park is selected.**


 **Suitable eye protection must be worn when working in the area of the battery.**

 **Do not attempt to start the disabled vehicle if it is suspected that the electrolyte in the battery is frozen.**

 **During normal use, batteries emit explosive gas sufficient to cause severe explosions and capable of causing serious injury - keep sparks and naked lights away from the engine compartment.**

 Make sure there is no physical contact between the donor and disabled vehicles other than the jump leads.

 Make sure that the slave battery or starting aid is a 12 volt device.

 Disconnect the jump leads prior to operating any electrical equipment.

Note: Before connecting jump leads ensure that the battery connections on the disabled vehicle are correct, and that all electrical equipment has been switched off.

1. Connect one end of the positive (Red) jump lead to the positive terminal on the donor vehicle's battery.
2. Connect the other end of the positive jump lead to the positive terminal on the disabled vehicle's battery.
3. Connect one end of the negative (Black) jump lead to the negative terminal on the donor vehicle's battery.
4. Connect the other end of the negative jump lead to a suitable earth point on the disabled vehicle. The earth point should be at least 0.5 metres (20 inches) away from the battery, and as far as possible from any fuel or brake pipes.

Note: Check that all leads are clear of any moving components, and that all four connections are secure.

5. Start the engine of the donor vehicle, and allow it to idle for a few minutes.
6. Start the engine of the disabled vehicle.