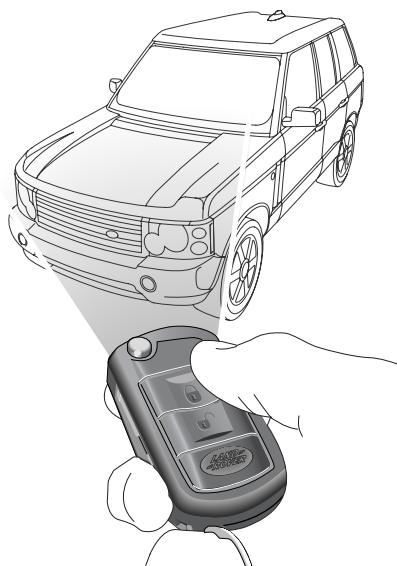


Locks and Alarm

ALARM SYSTEM



LAN0557G

The security system fitted to your vehicle is Thatcham category one approved, and meets European regulation 97 and directive 95/56/EC.

Note: The radio frequency used by your remote control may be used by other devices. For example: amateur radios, medical equipment, wireless headphones, or other remote control devices. This may cause the frequency to be jammed, and prevent your remote control from operating correctly.

Environmental and atmospheric conditions can affect the operation of remote controls and the operating range may vary considerably depending on the vehicle's location.

Security Information

For your own safety, and that of the vehicle, when the vehicle is left unattended:

- Apply the parking brake.
- Remove all keys and remote controls from the vehicle prior to locking the doors.
- Close all doors, windows, luggage compartment (including blind), sunroof, and glove box.
- Park the vehicle where it is visible (a well lit area after dark).
- Keep your vehicles keys safely out of sight.
- Never leave children or pets unattended in the vehicle.
- Never leave luggage or valuables on display.

Your vehicle is fitted with a sophisticated electronic anti-theft alarm and engine immobilisation system. There are also a number of additional security features, some of which are selectable options and some are standard features of the vehicle.

In order to ensure maximum security and operating convenience, you are strongly advised to gain a full understanding of the features and alternatives available, by thoroughly reading this section of the handbook.

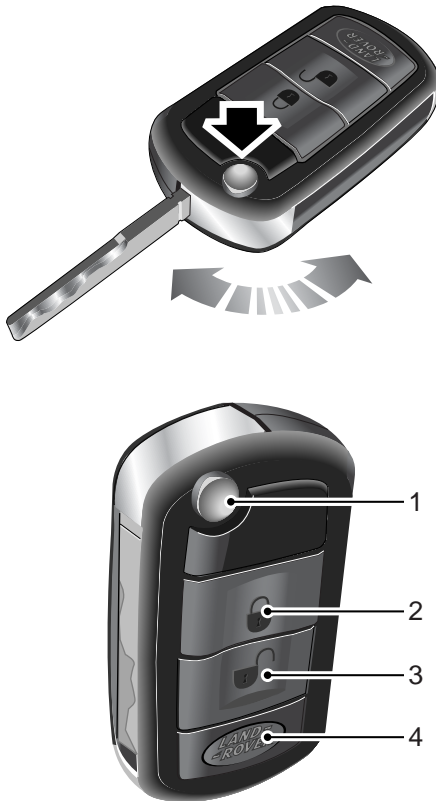
Note: For maximum security always superlock the vehicle. If passengers or animals are to be left in the vehicle, windows and/or sunroof are left open, or the vehicle is on a moving platform, e.g. a ferry, lock the vehicle by pressing the lock button (or turning the key) twice within ten seconds. This disables the superlocking, tilt sensing and interior space protection.

Locks and Alarm

Using the remote control

While it is not necessary to point the remote control at the vehicle, the remote control must be within range of the vehicle when a button is pressed. The operating range may vary depending upon the condition of the remote control battery, and may sometimes be limited by physical and geographical factors.

Remote control buttons



The four buttons on the remote control are used as follows:

1. Key release button: Press to unfold the key.
2. Lock button: Press to superlock all doors and to activate the perimetric alarm and interior space protection and activate the tilt sensor. See **Superlocking, 41** and **Tilt sensor, 42**.

Press twice to superlock all doors and activate the perimetric alarm, but not activate interior space protection and tilt sensor.

Press and hold to activate the lazy locking facility. See **Lazy locking/unlocking, 45**.

3. Unlock button: Press once to disarm the alarm and unlock the driver's door. Press again to unlock the remaining doors. See **Single point entry, 43**.

Press once to activate the memory seats, mirrors and steering column settings. See **DRIVER'S SEAT MEMORY FACILITY, 54**. This will also activate the lazy unlocking facility. See **Lazy locking/unlocking, 45**.

4. Tailgate button: Press to unlock the tailgate and to disarm the interior space protection. All other apertures remain locked and the perimetric protection on the other apertures remains armed.

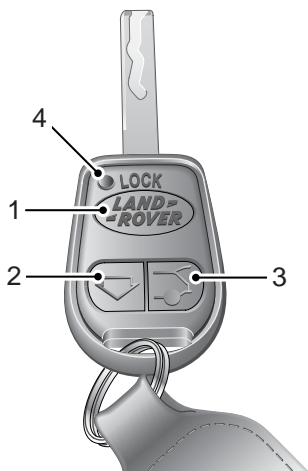
Press and hold to activate the panic alarm.

WARNING

Never leave the remote control in the vehicle if children or animals are also left in the vehicle. The vehicle's systems and remote control functions could be operated, which may result in injury.

Locks and Alarm

Remote control buttons (Japan only)



H5822G

The three buttons on the remote control are used as follows:

1. Lock button: Press to superlock all doors and to activate the perimeter alarm and interior space protection and activate the tilt sensor. See **Superlocking, 41** and **Tilt sensor, 42**.

Press twice to superlock all doors and activate the perimeter alarm, but NOT activate interior space protection and tilt sensor.

Press and hold to activate the lazy locking facility. See **Lazy locking/unlocking, 45**.

2. Unlock button: Press once to disarm the alarm and unlock the driver's door. Press again to unlock the remaining doors See **Single point entry, 43**.

Press once to activate the memory seats, mirrors and steering column settings. See **DRIVER'S SEAT MEMORY FACILITY, 54**. This will also activate the lazy unlocking facility. See **Lazy locking/unlocking, 45**.

3. Tailgate button: Press to unlock the tailgate and to disarm the interior space protection. All other apertures remain locked and the perimeter protection on the other apertures remains armed.

Press and hold to activate the panic alarm.

4. Remote control indicator: Flashes once for each press of any button, as confirmation of operation.

Locking

Shut all doors, bonnet and tailgate, then press the lock button once or turn the key in the driver's door lock towards the rear of the vehicle once:

- All doors are superlocked. See **Superlocking, 41**.
- Engine immobilised.
- Perimeter alarm activated (protects the doors, bonnet and tailgate).
- Interior space protection activated.
- Tilt sensor activated.

The direction indicators flash once and the anti-theft alarm indicator (below the rear-view mirror) starts to flash to confirm that the vehicle is secure.

Unlocking with the remote control

- Press the unlock button once to disarm the alarm and unlock the driver's door only. See **Single point entry, 43**.
- Press the unlock button twice to disarm the alarm and unlock all the doors.

In either case, the interior lights illuminate and the direction indicators flash twice.

Locks and Alarm

Unlocking with the key

After a remote control lock: Turn the key in the driver's door lock towards the front of the vehicle to unlock the driver's door - the alarm will sound when the door is opened. Unlocking the door using the key will not disarm the alarm - press the unlock button on the remote control, or turn the starter switch to the second position, to disarm the alarm.

After a key lock: Turn the key in the driver's door lock towards the front of the vehicle to unlock the driver's door and disarm the alarm. Turn the key a second time to unlock the other doors.

Superlocking

WARNING

Never superlock the vehicle with people, children or pets inside. In an emergency they would be unable to escape and the emergency services would be unable to release them quickly.

Superlocking immobilises the interior door handles, thereby preventing an intruder from gaining entry by smashing a window and reaching inside the vehicle to operate the door handles.

Superlocking is activated automatically whenever the vehicle is locked using either the remote control or the key.

If superlocking is required, but NOT interior space protection, press the lock button on the remote control twice within 10 seconds (or turn the key towards the rear of the vehicle twice within the same time period). Allow for a two-second delay before pressing the lock button a second time.

Locks and Alarm

Tilt sensor

Your vehicle is fitted with a tilt sensor which activates the alarm if the vehicle is tilted fore and aft, or side to side, after it has been superlocked.

The alarm will sound if theft is attempted by hoisting onto another vehicle or if a side is lifted to attempt wheel removal.

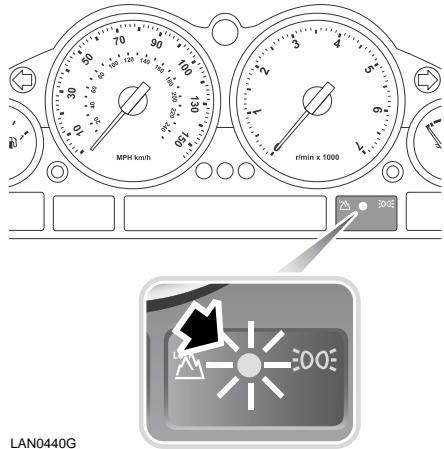
If you wish to have the doors locked but the tilt sensor disabled (e.g. when aboard a ferry or having the vehicle transported on a recovery truck) press the lock button on the remote control twice within 10 seconds (or turn the key in the driver's door lock towards the rear of the vehicle twice within 10 seconds).

Partial arming

If the driver's door is not fully closed when the remote control lock button is pressed, all closed doors will lock, but the driver's door will not. If the driver's door is subsequently closed, the locking procedure must be repeated to lock the driver's door.

If a passenger door or other aperture is not fully closed when the remote control lock button is pressed, the partial arming attributes of the security system will enable as much of the system to be armed as possible (all fully closed door, bonnet or tailgate apertures will be protected, but an open door will not). As soon as the open aperture is closed, the system will automatically revert to an armed state, with interior space protection activating 30 seconds after all apertures are closed.

Anti-theft alarm indicator



The indicator provides information about the status of the alarm system, as follows:

When the alarm is armed: The indicator flashes at a slow frequency and continues to flash as an anti-theft deterrent until the alarm is disarmed.

If interior space protection is disabled when the alarm is armed (by a double operation of the lock button or key), the indicator will illuminate constantly for 1 second as confirmation.

When the alarm is partially armed (mislock): The indicator flashes rapidly for 10 seconds, then flashes at a slower rate as an anti-theft deterrent until the alarm is disarmed.

If the alarm has been triggered: When the alarm is triggered, the indicator flashes rapidly for 5 minutes, before returning to a slow frequency.

If the indicator flashes rapidly after the vehicle is unlocked, this indicates that the alarm has been triggered during the driver's absence. The indicator will flash rapidly for 10 seconds.

Locks and Alarm

If the alarm sounds

If the alarm is triggered, the alarm will sound for 30 seconds and the hazard warning lamps will flash for 5 minutes, before switching off and resetting itself to the same protection status that existed prior to the alarm being triggered.

To silence the alarm, press the unlock button on the remote control.

Single point entry

This is a personal security feature which enables the driver's door only to be unlocked, leaving the other doors in a locked state. It is operated as follows:

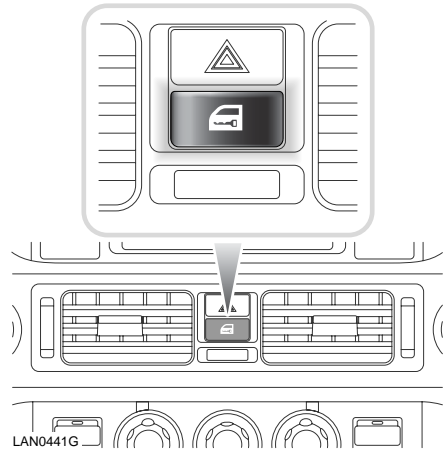
- Press the unlock button once to unlock the driver's door (or turn the key in the driver's door lock towards the front of the vehicle, if the vehicle was locked using the key).
- Press the unlock button (or turn the key) a second time to unlock the remaining doors.

When the vehicle is unlocked using single point entry, if the master locking switch is then pressed, the driver's door will relock. A second press is required to unlock all the doors.



Single point entry can be disabled on all remote controls, or on an individual remote control, by a Land Rover Dealer/Authorised Repairer.

Master locking switch



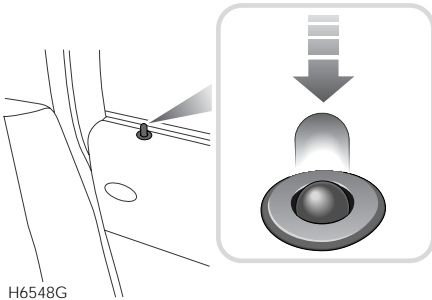
This is a personal security feature which allows all the doors to be locked or unlocked from inside the vehicle (while driving or with the vehicle stationary). Press the switch to lock (the alarm will not be armed) or unlock.

If passengers are to be left inside the vehicle when it is locked, do not use the remote control or key to lock the vehicle. Always get a passenger to use the Master locking switch to lock the vehicle, once the doors are shut.

Note: *If the locks have already been superlocked, the switch will not release the locks.*

Locks and Alarm

Interior door handles and door sill locking buttons



From inside the vehicle, each door can be individually locked by depressing the appropriate door sill button. However, doors cannot be unlocked by raising the sill button.

Use the door handles to unlock, as follows:

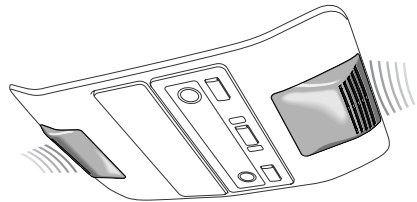
- First operation of the door handle unlocks the door.
- Second operation of the door handle opens the door.

When the master locking switch is activated, all door locking buttons will be depressed automatically.

Interior space protection

Interior space protection is activated whenever the alarm is armed.

Caution: Never activate interior space protection if windows or sunroof are to be left open, or if passengers or animals are to be left inside the vehicle - any movement will activate the alarm.



Interior space protection is designed to protect the interior of the vehicle from intrusion (entry by a thief through a smashed window, for example). A pair of sensors monitors the interior space and activate the alarm if air movement is detected in the passenger compartment.

Note: Interior space protection cannot be activated if a door is open.

Disabling interior space protection: If there is a requirement to disable interior space protection (if a window or sunroof is to be left open, for example), press the lock button twice within 10 seconds. If locking with the key, turn the key in the driver's door lock towards the rear of the vehicle twice within 10 seconds.

Locks and Alarm

Drive-away locking

This security feature locks all the doors automatically when the vehicle speed exceeds 16 km/h (10 mph).

Note that drive-away locking is not selectable by the driver, and that operation of the door locks by any other means (master locking switch on the fascia panel, for example) will unlock the doors. Drive-away locking can be configured by your Land Rover Dealer/ Authorised Repairer to automatically relock the doors after they are unlocked, when the vehicle speed exceeds 16 km/h (10 mph).



Drive-away locking can be selected, deselected or re configured for individual remote controls, by a Land Rover Dealer/Authorised Repairer.

Automatic relock

If the vehicle is unlocked using the remote control, but no door or tailgate is opened after 2 minutes, the vehicle will relock (but not superlock). The alarm will not be re-activated.



Automatic relock can be selected or deselected by a Land Rover Dealer/ Authorised Repairer.

Panic alarm

If the tailgate unlock button on the remote control (see **Remote control buttons, 39**) is pressed and held, the alarm will sound and the hazard warning lamps will flash (market permitting). This feature is to draw attention to the vehicle and driver, and to deter potential thieves/attackers.



The panic alarm facility can be selected or deselected by a Land Rover Dealer/ Authorised Repairer.

Lazy locking/unlocking

WARNING

Ensure that no children, pets, or obstructions are in any open aperture before operating lazy locking. Safety mechanisms are in place to prevent serious injury, however, injuries can still occur.

***Note:** Ensure that all adult passengers are familiar with the controls and the potential dangers of electrically operated windows and sunroof.*

***Note:** In some markets, the lazy lock/unlock feature is not available when using the remote control. The key must be used.*

Lazy locking or unlocking enables you to use the remote control to open or close the windows and sunroof at the same time as you secure or unlock the vehicle.

Lazy locking:

1. Ensure that all doors, bonnet and tailgate are properly closed.
2. Press and hold the lock button on the remote control (or turn and hold the key in the driver's door lock towards the front of the vehicle) until all the windows and the sunroof are closed - the vehicle security system will be armed.

***Note:** Window and sunroof movement will stop if the button or key is released during this operation.*

Locks and Alarm

Lazy unlocking:

1. Press and hold the unlock button on the remote control (or turn and hold the key in the driver's door lock rearwards), the windows and then the sunroof will fully lower/open - the vehicle security system will be disarmed and the driver's door will unlock.
2. Release the button or key when the windows and sunroof are open as required.



Lazy locking/unlocking can be selected or deselected by a Land Rover Dealer/ Authorised Repairer.

ENGINE IMMOBILISATION

Engine immobilisation is an important aspect of the security system. It is designed to safeguard the vehicle from theft should the driver forget to lock the doors, and prevents the engine from being started unless the genuine remote control key is inserted into the starter switch. Engine immobilisation is automatic whenever any of the following conditions occur.

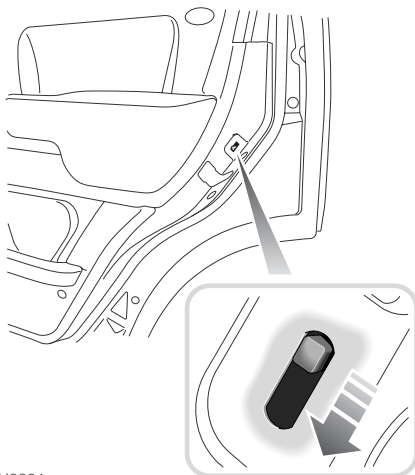
- The vehicle is locked using the remote control or key.
- Three seconds after the starter switch has been turned off and the driver's door opened.
- If the key is removed from the starter switch.

Note: *The engine will be re-mobilised automatically whenever the genuine remote control key is inserted into the starter switch and turned to the first position.*

CHILD-PROOF LOCKS

WARNING

Never leave children unsupervised in the vehicle. Doing so increases the risk of death or serious injury.



H3804

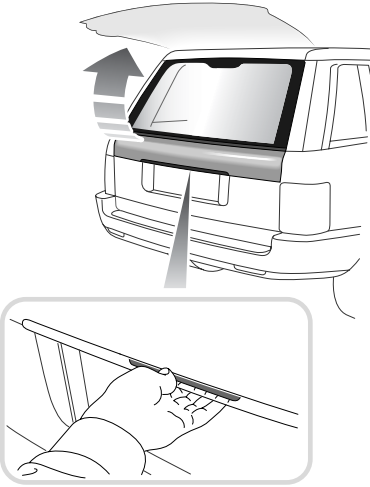
Move the locking levers on the rear doors down to engage the child locks.

With the child-proof locks engaged, the rear doors cannot be opened from inside the vehicle, thereby avoiding the risk of a door being opened accidentally while the vehicle is moving.

Locks and Alarm

TAILGATE

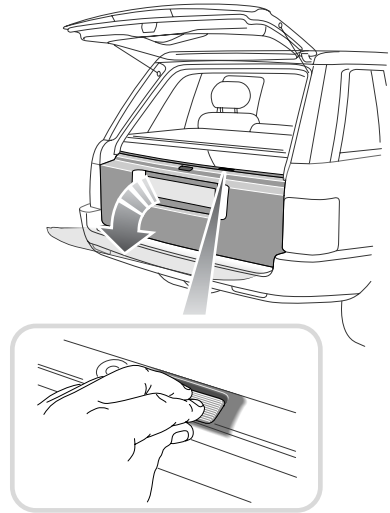
Opening the upper tailgate



H3929

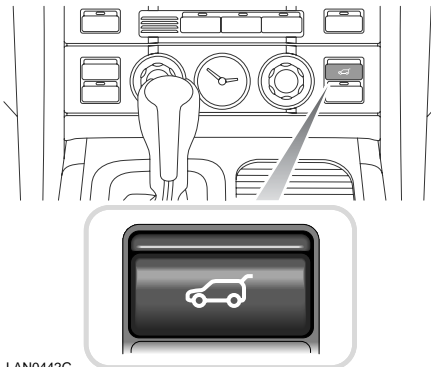
With all doors unlocked, press the switch on the bottom edge of the upper tailgate and lift to open.

Opening the lower tailgate



H3930

With the upper tailgate open, press the release switch on the top of the lower tailgate (see inset), then lower the tailgate.



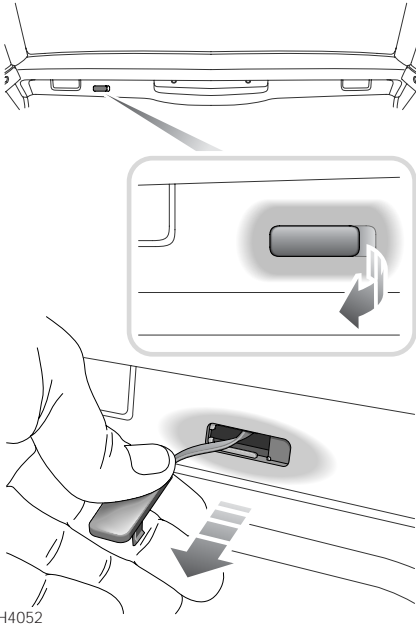
LAN0442G

If single point entry has been used and only the driver's door is unlocked, press the tailgate release button (illustrated above).

Locks and Alarm

Emergency manual operation

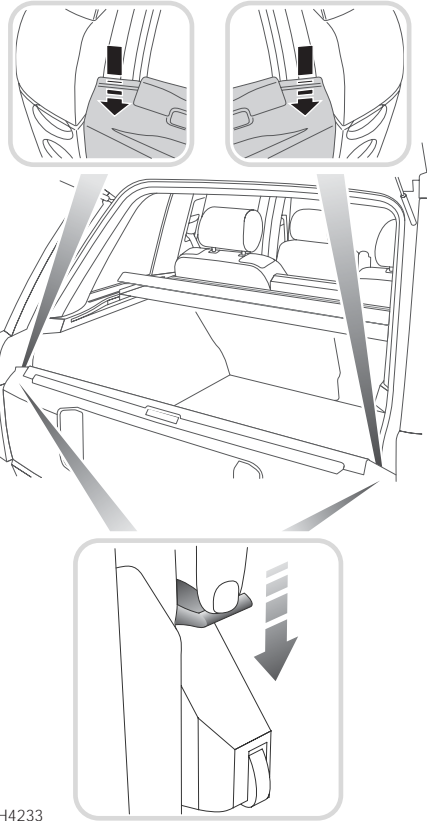
Upper tailgate:



If the battery has been disconnected or has discharged, the tailgate can be opened manually as follows:

- Fold the rear loadspace cover. See **Folding the loadspace cover from inside the vehicle, 165**.
- From the rear loadspace, lever out the plastic tab (see inset).
- Pull the tab to release the upper tailgate.
- Raise the upper tailgate.

Lower tailgate:



With the upper tailgate open, push down on the two hidden catches (see insets), either side of the tailgate. The catches can be operated either one at a time, or simultaneously.