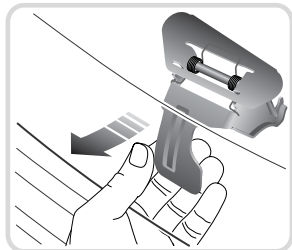
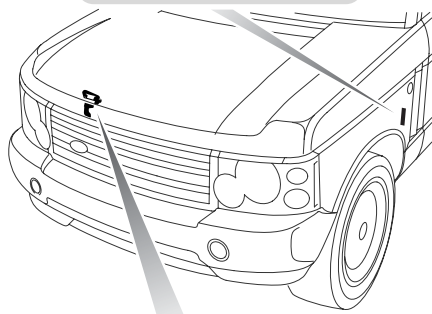
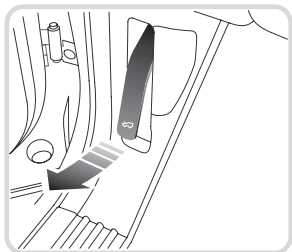


Bonnet Opening

BONNET OPENING



LAN0595G

1. From inside the vehicle on the driver's side, pull the bonnet release handle (see upper inset).
2. Lift the bonnet safety catch lever (lower inset) and raise the bonnet.

Closing the bonnet

WARNING

Do not drive with the bonnet retained by the safety catch alone.

After closing the bonnet, check that the lock is fully engaged by attempting to lift the front edge of the bonnet. This should be free from all movement.