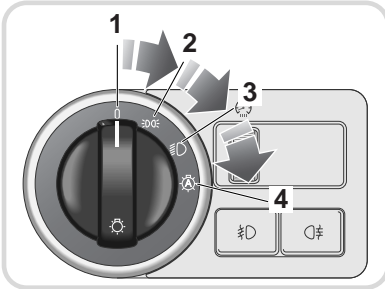
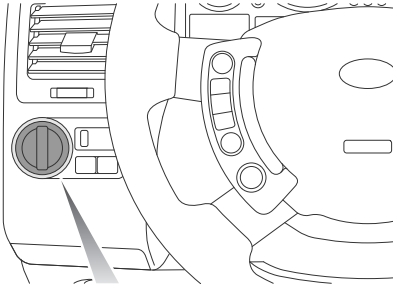


# Lamps and Indicators

## EXTERIOR LAMPS

### Lamps master switch



LAN0448G

1. Side lamps and headlamps off.
2. Side lamps on.
3. Headlamps on.
4. Automatic control on.

### Side lamps

The front and rear side lamps, along with licence plate lamps, illuminate when the lamps master switch is turned to positions **2** or **3**, regardless of the position of the starter switch.

**Note:** A warning indicator on the instrument panel illuminates when the lamps are turned on, either manually or by automatic control.

### Automatic control lamps

With the lamps master switch in position **4** and starter switch in the second position, the side lamps, low beam headlamps and license plate lamps will illuminate automatically when the ambient light falls below a pre-defined level.

All of the lamps will go out when the ambient light rises above that level.

### Parking lamps

If required, the side and tail lamps on the left or right can be left illuminated at a reduced output, when the vehicle is parked.

With the starter switch turned off, move the indicator stalk fully up (to illuminate the right hand side lamp and tail lamp) or fully down (to illuminate the left). Remove the starter key and lock the vehicle in the normal way - the lamps will remain illuminated.

**Note:** The lamps remain on with a reduced power output, to help prevent inadvertently discharging the battery.

### Daytime running lamps

If daytime running lamps are enabled, the headlamp low beams will illuminate when the engine is running and the lamps master switch is turned off. Depending on market requirements, side lamps and license plate lamps may also illuminate.

The instrument pack illumination remains off.



*Unless they are required or prohibited by law, daytime running lamps can be disabled or enabled by your Dealer.*

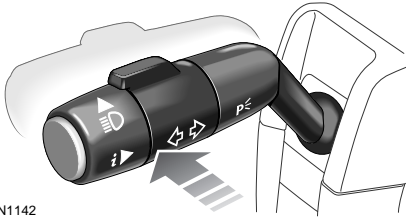
### Condensation

In certain circumstances, misting may occur on the inside of a lamp lens. This is caused by natural changes in environmental conditions.

This misting is not detrimental to lamp performance and will clear during normal usage.

# Lamps and Indicators

## Headlamp high and low beams



Push the stalk away from the steering wheel to change headlamps to high beam (Blue warning indicator illuminates). Pull the stalk back towards the steering wheel to change back to low beam headlamps.

To flash the headlamps, pull the stalk part way towards the steering wheel and release.

**Note:** Do not use main beam where it may dazzle other road users.

## Headlamp courtesy delay

The headlamps can be set to remain on for a short period after the vehicle is parked. This feature can be used to illuminate your way when you leave the vehicle.

## **Vehicles not fitted with automatic control lamps:**

- With the headlamps illuminated, turn the starter switch off. **HEADLAMP DELAY** will appear in the message centre.
- Turn the lamp master switch to the Off position.
- Remove the starter key.

## **Vehicles fitted with automatic control lamps:**

- With the lamps master switch in the off or automatic control lamps position, turn the starter switch off.
- Use the stalk control to flash the headlamps. **HEADLAMP DELAY** will appear in the message centre.
- Remove the starter key.

The headlamps and tail lamps will now remain illuminated for approximately 40 seconds after closing the driver's door, before turning off automatically.

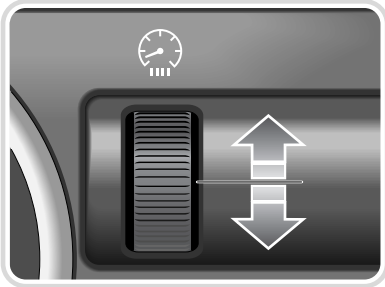
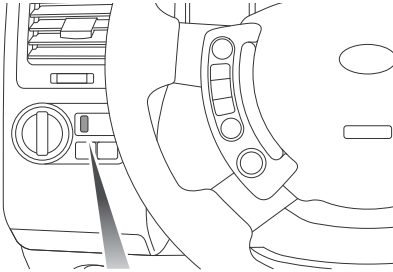
If necessary, the courtesy delay can be cancelled at any time by turning the starter switch or rotary light switch on and then off again.



*Headlamp courtesy delay can be disabled by a Land Rover Dealer/Authorised Repairer, if required. The headlamp courtesy time delay period can also be adjusted by a Land Rover Dealer/Authorised Repairer, to suit your requirements.*

# Lamps and Indicators

## Instrument illumination control



LAN0449G

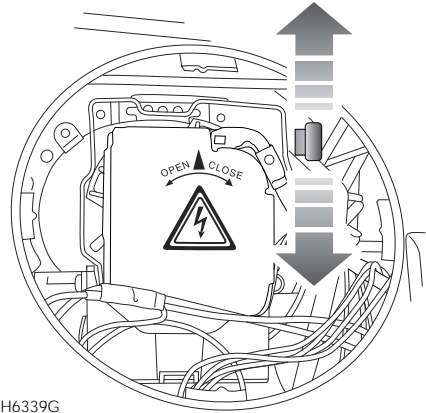
Rotate the control upwards to increase, or down to decrease, the intensity of the instrument panel illumination.

The illumination control also adjusts the intensity of all switch illumination forward of the driver.

## HEADLAMPS - DRIVING ABROAD

When touring in a country where traffic drives on the opposite side of the road to where you normally drive, use the tourist lever mechanism within each headlamp unit to alter the beam pattern. This enables the vehicle to be driven without having to stick blanking decals onto the headlamp lens.

Position of the lever illustrated will vary depending on type of headlamps and side of vehicle. It may be on either side of the headlamp bulb aperture.



H6339G

*Bi-Xenon headlamp illustrated, Halogen similar.*

Remove the headlamp rear access cover. See **Bulb access, 257**. Move the lever to adjust the beam.

Repeat the process for the other headlamp unit.

**Note:** Remember to switch the headlamp beams back over when you return from your journey.

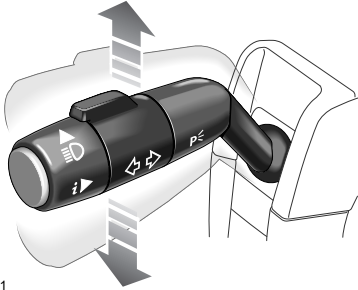
### Default lever positions

Xenon headlamps	
Right-hand headlamp	Up
Left-hand headlamp	Up

Halogen headlamps	
Right-hand headlamp	Down
Left-hand headlamp	Up

# Lamps and Indicators

## DIRECTION INDICATORS



LAN1141

Move the stalk down to indicate a left turn and up to indicate a right turn. The appropriate green warning indicator in the instrument pack will flash.

When the stalk is held against spring pressure the relevant indicator flashes until the stalk is released.

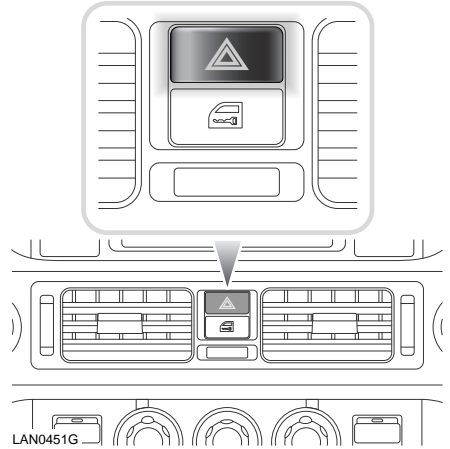
### Lane change flash

If the stalk is briefly pushed up or down then released, the relevant indicator will flash three times.



*Lane change flash can be disabled/enabled by a Land Rover Dealer/Authorised Repairer.*

## HAZARD WARNING LAMPS



Press the switch to turn the hazard warning lamps on. When the hazard warning lamps are operating, the indicator warning lamps will flash in time with the hazard warning lamps.

**Note:** *Hazard warning lamps can be used when the ignition is on or off.*

# Lamps and Indicators

## FOG LAMPS

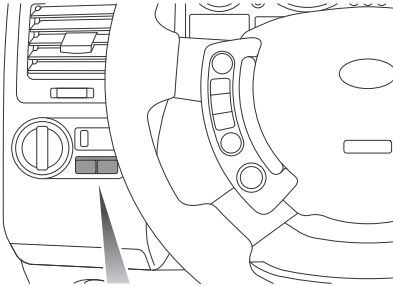
### WARNING



**Use fog lamps only when visibility is severely restricted. As soon as conditions clear, switch off fog lamps to prevent dazzling of other road users.**

**Note:** If the Automatic control lamps have been selected and the ambient light falls below a pre-defined level, then the front and rear fog lamps can be activated.

If the ambient light rises above that level, then the fog lamps will extinguish, along with the other external lamps. If the ambient light then falls below this level again, the external lamps will illuminate, but the fog lamps will need to be reselected.



LAN0450G

## Front fog lamps



Press to operate, press a second time to switch off (the warning indicator in the instrument panel illuminates when the fog lamps are switched on).

The fog lamps can only be operated when the starter switch is in the second position and the side or headlamps are also switched on.

The fog lamps extinguish automatically when the side lamps or the starter switch is turned off and need to be reselected when the starter switch is turned back on.

Always remember to switch the fog lamps off as soon as visibility permits.

## Rear fog lamps



Press to operate, press a second time to switch off (an indicator in the switch illuminates when the lamps are switched on). The rear fog lamps illuminate only when the starter switch is in the second position and the headlamps (or front fog lamps) are also switched on. Switching off the headlamps, or front fog lamps, or turning the starter switch off will automatically extinguish the rear fog lamps (the lamps will not illuminate again unless switched on).

Always remember to switch the fog lamps off as soon as visibility permits.