

THE NAVIGATION SYSTEM

Navigation instruction is by map and turn information displayed on the touch screen and can be complemented by voice guidance if required. A detailed intersection map is also displayed in the instrument panel. The system uses signals from Global Positioning System (GPS) satellites combined with information from vehicle sensors and from data stored on the hard drive, to establish the true vehicle position.

Note: Mapping data loaded on the hard drive is relevant to the market in which the vehicle is first sold and will provide guidance and information only for that area. Your local Land Rover Retailer/Authorized Repairer will have details of software updates.

Using this combination of data sources the vehicle navigation computer enables you to plan and follow a route map to your desired destination.

The touch screen is used to control navigation via menus, text screens and map displays.

USING THE NAVIGATION SYSTEM

⚠ WARNING

In the interests of safety, only operate, adjust or view the system when it is safe to do so.

⚠ WARNING

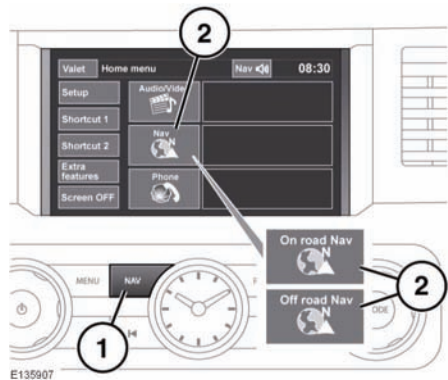
The navigation system is not a substitute for driving safely, with due care and attention. Drivers should not assume that a feature will correct errors in judgement in driving. The navigation system may not function properly in all circumstances.

⚠ WARNING

Do not allow the system to distract the driver while the vehicle is moving. Driver distraction can lead to accidents causing serious injury or death.

⚠ WARNING

Do not adjust the touch screen controls, or allow the system to distract the driver, while the vehicle is moving. Driver distraction can lead to accidents, causing serious injury or death.



1. NAV shortcut button.
2. NAV soft key.

Note: On vehicles with off-road navigation, the soft key includes On road or Off road, to show the current Navigation mode.

From the Home menu, touch the **NAV** soft key. Alternatively, press the **NAV** shortcut button on the fascia. A caution screen will be displayed.

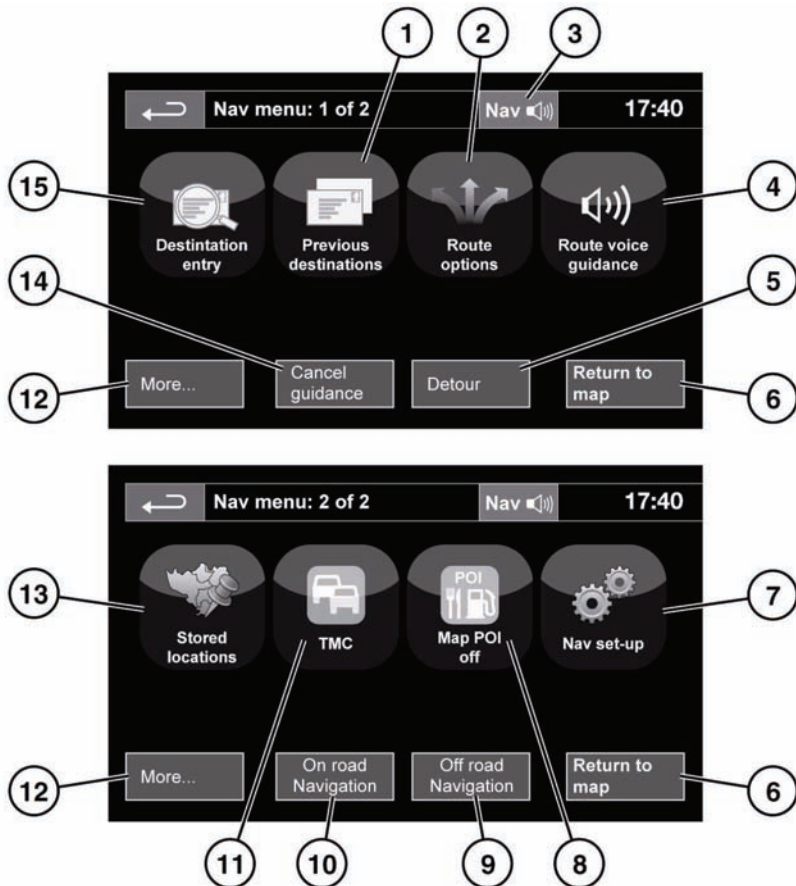
If the navigation screen language has not been set, now is the time to set it. Select **Language**, make a selection and confirm it by touching the **OK** soft key. You will be returned to the **CAUTION** screen.

After touching the **Agree** soft key, the touch screen will display the **Nav menu** (which is the navigation system Main menu and covered over two screens) or the screen that was in use when you last switched off the system.

Note: After approximately 12 seconds, the menu soft keys will disappear and display the map information only. This will show current vehicle position. Touch the **Nav menu** soft key to display the Main menu screen.

At this point, the first time user should set up personal preferences in the **Nav set-up** area. These settings are applied whenever navigation is used.

MAIN MENU



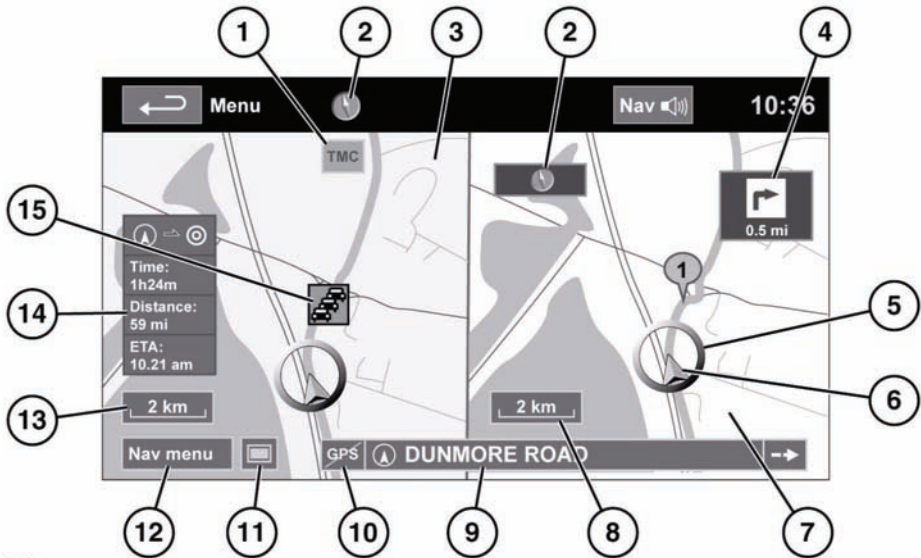
E135923

1. **Previous destinations:** Displays previous destinations entered.
2. **Route options:** Allows selection of various options for the route.
3. When a destination is set, the Range Rover logo is replaced by a soft key which enables the last voice instruction to be repeated.
4. **Route voice guidance:** Allows the voice guidance messages to be turned off for the current journey. The soft key is highlighted while voice guidance is enabled.
5. **Detour:** Allows a detour from the current route.
6. **Return to map:** Advances to the main map screen.
7. **Nav set-up:** Settings for the navigation system.

Navigation system

8. **Map POI off:** Turns the POI (Point Of Interest) icons on the map on/off.
9. **Off road Navigation:** Changes the system to Off road navigation mode.
10. **On road Navigation:** Changes the system to On road navigation mode.
11. **TMC** (Traffic Message Channel): Not used for entering a destination but, when enabled, will provide data about road conditions and any events that may affect the journey.
12. **More....:** Displays the other Nav menu screen.
13. **Stored locations:** Manages the stored locations.
14. **Stop guidance:** Cancels current route guidance.
15. **Destination entry:** Provides a choice of options for entering a destination.

MAP SPLIT SCREEN



E135924

1. TMC (Traffic Message Channel) information.
2. Compass (always indicates north). Press to change style of icon.
3. Normal screen.
4. Next direction display.
5. Current vehicle position.
6. Vehicle direction arrow.
7. Split screen.
8. Split screen scale/zoom setting.
9. Current street location.
10. No GPS signal.
11. Screen mode selection.
12. Navigation menu.
13. Normal screen scale/zoom setting.
14. Distance/time to destination.
15. TMC event (traffic congestion).

SCREEN MODES

Touch the screen mode selection button to view a series of icons, each depicting a different screen mode (as detailed below). Touch the relevant icon to select the desired screen mode.



Full screen view.



Split screen view. A more detailed view of the local area and road system is displayed on the right.



Shows the next intersection in the right half screen.



This view is only available when traveling on a motorway. It displays automatically to show remaining exits along your route.



Shows list of forthcoming intersections and turn directions on the right half screen.

SEARCH AREA

The navigation map database is divided into countries, or geographically defined areas within countries, that the navigation system recognises as search areas. When setting a route, the destination (or waypoint) entered must be in the currently selected search area.

Before attempting to set a destination or waypoint, set the correct search area as follows:

1. Select **Destination entry** from the main navigation menu.
2. Select page 2 of **Destination entry** then select **Search area**.
3. Scroll through the list and select the 2 letter code that corresponds to the desired destination area.
4. Select **OK**. The destination entry menu is shown and the information window shows the currently selected search area.

SETTING A DESTINATION

After touching **Agree**, the initial map screen is displayed, now select **Nav Menu**.

From the Navigation Menu, select **Destination entry**.

Select **Address** from the **Destination** screen and input the town name.

Once sufficient letters have been entered, touch **List** to display all the possible towns.

If necessary, use the scroll arrows to the left of the list to search up or down. Select the town you require.

Now enter the road name. Once sufficient letters have been entered, touch **List** to display all the possible roads.

Select the road you require.

Enter the house number of the address (if known) then touch **OK** to confirm.

If the house number is not known, press **OK** - the mid-point of the road is then used as the destination.

The map screen showing the route settings and destination details is displayed.

START GUIDANCE

After touching **Destination**, the system will calculate the route.

There is now a choice to select **3 Routes**, **Change route** or **Go**. Select **Go** to start navigation guidance.

Touch **3 Routes** to display a choice of three different route options on the map.

The roads on the map are drawn in three different colors to highlight each route.



E137155

EcoRoute helps you find the most fuel efficient route available. A display of three full leaves indicates the most fuel efficient route.

Select route **1**, **2** or **3** by touching the respective box displayed on the right side of the map.

Touch **Change Route** followed by **Route preferences**, to change the route settings. If a destination is already set, touch **Waypoint** to add a waypoint in the journey if required.

When you have made your selection, if any, touch **Go**.

Note: As you approach a intersection, in addition to the voice guidance, an inset on the map will display an enlarged view of the intersection.

Note: The next turn on the route is displayed in the message center.

EASY ROUTE

In **Route options**, **Easy Route** can be turned **On** or **Off**.

When **On** is selected, **Easy Route** changes the calculation parameters of **Route 3** in order to reduce:

- intersections.
- Turns.
- Turns that cross traffic.
- The priority of minor roads.
- Complex intersections and maneuvers.

LEARN ROUTE

In **Route options**, **Learn Route** can be turned **On** or **Off**.

When **On** is selected, if you make the same deviation from the proposed route three times, then the system will memorize the deviation and offer that as the normal route from then on. Select **Reset all routes** to delete any learnt routes and return to the default settings.

OFF-ROAD NAVIGATION

The system can be switched between On-road and Off-road navigation by pressing the fascia **NAV** button twice, from anywhere in the system, then selecting **On road** or **Off road** as required. Alternatively, the navigation mode can be selected from page 2 of the Main menu. The Navigation soft key on the Touch screen Home menu displays **On road NAV** or **Off road NAV**, whichever is the current Navigation mode.

Off-road navigation maps are similar to the on-road maps but have additional features and information, such as a large compass display, heading, altitude, latitude and longitude etc.

When switching to off-road navigation mode during on-road guidance, the current highlighted route will be removed from the map and on-road guidance will be suspended.

Way points and destination icons will remain displayed. The destination is marked with a double circle.

When exiting off-road guidance, the system recalculates the route and reverts to on-road guidance.

Note: TMC is not available in off-road navigation mode.

VOICE GUIDANCE

To turn voice guidance on or off but maintain route guidance, proceed as follows:

1. Touch **Nav menu** on the map menu screen.
2. Touch the **Route voice guidance** soft key. The soft key will be highlighted when voice guidance messages are enabled.

CANCEL ROUTE GUIDANCE

To stop route guidance, proceed as follows:

1. Touch **Nav menu** on the map menu screen.
2. Touch the **Cancel guidance** soft key.

QUICK POI SELECTION

Touch the Map screen to display the POI button. Touch the **POI** (Point of interest) button. The screen shows six suggested categories, five of which can be selected as quick points of interest.

Note: The POI icons will not be shown if the map zoom level is greater than ½ mile (1 km).

Select a Quick POI category, or select **More** to see further POIs. Touch **OK** to confirm a selection.

The map screen with the POI icon(s) is displayed. Select the five POIs you wish to see when the Quick POIs are displayed.

RESTORE SYSTEM DEFAULTS

If you have made any changes to the system's default settings, use this menu to restore the original settings.

MEMORY POINTS

From the navigation menu, select **Stored locations**. This enables you to manage destinations such as, place of work, home, favorite restaurant or areas to avoid.

From the **Stored locations** menu you can save up to 400 memory points or add your home address.

Select **Favorites** to add a stored location.

Select **Add**, **Edit** or **Delete** to view and manage the stored locations list.

Select **Add** to store a memory point.

MEMORY POINT DETAILS

From the **Stored locations** menu, select **Favorites**, then either **Add**, **Edit** or **Delete**.

Select **Info** to display the details of the selected memory point.

The details include Icon, Name, Position and Tel.

The telephone number can be called by touching the telephone button if a telephone is connected.

EMERGENCY

Not all countries have this facility. Touch **Emergency** on the **Destination entry** screen to display a list of local police stations, hospitals or Land Rover Retailers.

Press **Name** to display the list in alphabetical order or **Distance** to display the list in order of proximity to the current vehicle location.

Touch the name of the facility to set it as a destination or waypoint.

MAP

After selecting map, the local area map is displayed. Drag the circle to the area for your destination or waypoint, zooming in if required.

This location can be stored as a destination or waypoint.

COORDINATES

If you know the coordinates of your destination they can be entered from this screen. The full latitude must be entered first before the longitude coordinates can be entered.

When the coordinates have been entered, touch **OK**.

If the coordinates entered are not contained within the area covered by the available maps, a message will be shown. This can also occur if the incorrect coordinates have been entered.

RECALLING A PREVIOUS DESTINATION

After selecting **Previous destinations** from the menu, the screen shows a list of stored previous destinations. Select your destination by touching the bar. The details will be displayed for confirmation.

Note: In some markets, list scrolling is not active while driving, for legislative reasons. Only the items shown at the top of the list can be selected.

FREEWAY

After selecting **Freeway** from the menu, enter the freeway name or number, then select an entrance or exit. All of the entrance or exit intersections for the chosen road are displayed.

The map showing the selected freeway and the selected exit intersection is displayed.

The destination has now been set and the route is calculated.

POINTS OF INTEREST (POI)

After selecting **Points of interest** from the menu, touch **Name** to input the POI name, for example, **Gasoline** to display fuel stations on the map, or touch **List** for a list of POIs.

Alternatively, choose **All categories** to see all categories of POI and make your selection.

Use the scroll arrows to change pages.

Some POIs are sub-categorised, e.g. selecting **Community** will be further divided into:

- Community Center.
- Exhibition Center.
- Hospital.
- Park & Recreation.
- Town Hall

Note: If entering a POI name results in too many matches being listed, try entering the town name first. If you do not know the name of the POI you want, try selecting a POI category.

Note: POI icons can only be displayed up to the ½ mile (1 km) zoom level.

Once the POI has been selected the route is determined. Touch **Change route** to change the route settings, or touch **OK** to start the route calculation.

RETAILER LOCATIONS

Details of Land Rover Retailers are held on the Navigation System hard drive as a points of interest (POI) category. Certain Retailers may be located in areas that are not fully mapped on the hard drive. If a route is set to one of these Retailers, guidance may only be possible to the nearest town center; in this case a warning message will be displayed.

Note: If Land Rover Retailers (or certain other categories, such as airports) are selected, they will be displayed across all search areas.

ENTRY BY TOWN

If a town name is entered first, the points of interest listed will be restricted to that town.

1. From the Input POI Name screen, touch **Town**.
2. Enter the town name required.
3. Touch **List** to display the list of possible towns.
4. Select the town required.
The Input POI screen is displayed again.
5. Enter the POI name required.

CATEGORIES AND SUB-CATEGORIES

The POI database is divided into a number of categories. Each main category is further divided into a number of sub-categories.

The first entry in the list of Restaurant sub-categories, is **ALL**. This selects all of the Restaurant sub-categories.

To narrow the search, touch the **Town** button. This will display the alpha keyboard to allow the desired town name to be entered.

LIST SOFTKEY

The **List** button can be used when the characters entered reduce the possible entries to a small enough number.

You can also select **List** (when active) without entering a POI name. All the relevant points of interest will be displayed, e.g. in a selected town or category.

ALL SOFTKEY

The **All** button shows a list of all POI categories.

LOCAL POI SEARCH

This selects the points of interest in all categories within 20 miles (32 kilometers) of the vehicle.

- Touch the **All Local POIs** button.

RBDS-TMC OVERVIEW

Radio Data System-Traffic Message Channel (RBDS-TMC) is a feature that announces traffic hold-ups on your route as broadcast by radio stations that transmit TMC information.

Touch the **TMC** button on the Navigation Menu to access the TMC menu.

Touch the **Change** button to begin a search of all radio stations being received in your locality.

The tuner will scan the FM frequency once. This may take a few minutes. **Searching** will be displayed while scanning is in progress.

When a station is found which is offering TMC information, the RBDS name is shown on the list and the search for more stations will continue.

You can stop the search at any time and select any stations presented on the list, by touching the **Change** button or the button next to the desired station in the list.

RBDS-TMC DISPLAY

When a TMC signal is received the icon in the top left of the screen will appear green. If a TMC signal is not being received, the icon will be shown with a bar through it.

The system will inform the driver of any TMC-reported roadworks, narrow road, contraflow, accidents, slippery road, diversion, information, parking information, congestion or other hazard.

The driver is informed of a traffic event as follows:

- A TMC Event icon shown on the map at the location of the event.
- Text can be displayed showing the details of each occurrence which can be selected either by touching the screen icon or from the traffic information list.
- Dynamic route guidance, which calculates an alternative route when the system receives the traffic event warning affecting the route currently set in the navigation system.
- Traffic event list shows all events sorted by road name/ distance on your selected route in a straight line or along your actual route.

The information regarding the hold-up is maintained and updated even if the vehicle crosses into another country.

RBDS-TMC ICONS

Any traffic event (broadcast on TMC) in your area, will be displayed as a warning icon on the map and an alert may be displayed as a message giving the road number(s) and between which intersections the hold-up or event occurs. Voice guidance will also inform you of the hold-up when an event icon exists on the current route.








This data is stored in the system for up to of 30 minutes.

The color of the TMC icon changes in order to show the type and priority of a TMC event. The background color of the icon returns to normal when there is no longer an event or hold-up, or if any re-route instructions are calculated.

The TMC Event icons appear on the navigation map display to indicate the location and nature of a TMC event.

TMC Event icons will appear on the map, even if the event does not occur on your route.

LEVEL 1 TMC EVENT ICONS

-  Incident (Red star)
-  Moving Traffic Jam Ahead (Red arrow)
-  Moving Traffic Jam Both Carriageways (Red double arrow)
-  Slow Traffic Ahead (Yellow arrow)
-  Slow Traffic Both Carriageways (Yellow double arrow)
-  Information (Yellow circle)
-  Incident (Yellow star)



Stationary Traffic Ahead (Red arrow pointing on line)



Stationary Traffic Both Carriageways (Red double arrow pointing on line)

Note: Single arrow icons indicate that the traffic event affects traffic traveling in the direction of the arrow. Double arrows indicate that both directions are affected.

LEVEL 2 TMC EVENT ICONS



Other Hazard (Yellow)



Roadworks (Pink)



Narrow Road (Pink)



Contraflow (Pink)



Accidents (Pink)



Slippery Road (Yellow)



Diversion (Yellow)



Parking Information (Gray)



Information (Gray)



Congestion (Red)

USING TMC

Dynamic route guidance will calculate an alternative route to avoid a traffic event when the system receives an event warning. The system calculates a new route for all sections. However, if any way points are set, the system calculates for the next way point. If the event on route is serious (closed road) or if the new route is shorter than the current one and the current one was not recalculated within the last 5 minutes, then a message to confirm the new route will be displayed. This pop-up message will be displayed for 10 minutes and if the new route is not rejected, then the vehicle will follow the new route.

OWNERSHIP

The DATABASE and the copyrights and intellectual property or neighboring rights therein are owned by NAVTEQ Corporation or its licensors.

LICENSE GRANT

NAVTEQ Corporation grants you a non-exclusive licence to use your copy of the DATABASE for your personal use or for use in your business' internal operations. This license does not include the right to grant sub-licenses.

LIMITATIONS OF USE

The DATABASE is restricted for use in the specific system for which it was created. Except to the extent explicitly permitted by mandatory applicable laws, you may not extract or re-utilize substantial parts of the contents of the DATABASE, not reproduce, copy, modify, adapt, translate, disassemble, decompile, or reverse engineer any portion of the DATABASE.

LIMITATION OF LIABILITY

The price of the DATABASE does not include any consideration for assumption of risk of consequential, indirect or unlimited direct damages which may arise in connection with your use of the DATABASE.

Accordingly, in no event shall NAVTEQ Corporation or supplier of the navigation system using the DATABASE ('Supplier') be liable for any consequential, special, incidental or indirect damages, including without limitation, loss of revenue, data, or use, incurred by you or any third party arising out of your use of the DATABASE, whether in an action in contract or tort or based on a warranty, even if NAVTEQ Corporation or the Supplier has been advised of the possibility of such damages. In any event, NAVTEQ Corporation's liability for direct damages is limited to the price of your copy of the DATABASE.

THE DISCLAIMER OF WARRANTY AND LIMITATION OF LIABILITY, SET FORTH IN THIS AGREEMENT, DO NOT AFFECT OR PREJUDICE YOUR STATUTORY RIGHTS WHERE YOU HAVE ACQUIRED THE DATABASE OTHERWISE THAN IN THE COURSE OF A BUSINESS. Some states and laws do not allow the exclusion of implied warranties, so the above disclaimer may not apply to you.

⚠ WARNING

The DATABASE reflects reality as existing before you received the DATABASE and it comprises data and information from government and other sources, which may contain errors and omissions. Accordingly, the DATABASE may contain inaccurate or incomplete information due to the passage of time, changing circumstances, and due to the nature of the sources used. The DATABASE does not include or reflect information on - *inter alia* - neighborhood safety; law enforcement; emergency assistance; construction work; road or lane closures; vehicle or speed restrictions; road slope or grade; bridge height, weight or other limits; road or traffic conditions; special events; traffic congestion; or travel time.

NAVTEQ CORPORATION

Please read this agreement carefully before using the Navigation System.

This is a licence agreement for your copy of the Navigable Map Database, (the 'DATABASE') originally made by NAVTEQ Corporation), used in the Navigation System. By using this DATABASE you accept and agree to all the terms and conditions below.

TRANSFER

You may not transfer the DATABASE to third parties, except together with system for which it was created, provided that you do not retain any copy of the DATABASE, and provided that the transferee agrees to all terms and conditions of this agreement.

DISCLAIMER OF WARRANTY

NAVTEQ Corporation does not warrant or make any representations regarding, either express or implied, regarding the use or results of the use of the DATABASE in terms of its correctness, accuracy, reliability, or otherwise and expressly disclaims any implied warranties of quality, performance, merchantability, fitness for a particular purpose or non-infringement.

NAVTEQ Corporation does not warrant that the DATABASE is or will be error-free. No oral or written information or advice provided by NAVTEQ Corporation, your supplier or any other person shall create a warranty.

GOVERNMENT END USERS

If the DATABASE is for a region of North America and is being acquired by or on behalf of the United States government or any other entity seeking or applying rights similar to those customarily claimed by the United States government, the DATABASE is licensed with 'limited rights'.

Utilization of the DATABASE is subject to the restrictions specified in the 'Rights in Technical Data and Computer Database' clause at DFARS 252.227-7013, or the equivalent clause for non-defence agencies. Manufacturer of the DATABASE of North America is NAVTEQ Corporation, 10400 W. Higgins Road, Suite 400, Rosemont, Illinois 60018, USA.