

### SAFETY PRECAUTIONS

#### **⚠ DANGER**

Do not smoke, use a naked flame, or cause sparks while refueling. The resulting fire and explosion may cause serious injury or death.

#### **⚠ WARNING**

Avoid exposing the fuel gasses to any potential sources of ignition as the resulting fire and explosion may cause serious injuries and/or death.

#### **⚠ WARNING**

Switch off the engine when refueling, as it is both a source of extreme temperatures, and electrical sparks. Failure to do so may cause a fire or explosion.

#### **⚠ WARNING**

Switch off any personal electronic devices such as mobile phones or music players. They have the potential to trigger an explosion or a fire.

#### **⚠ WARNING**

Do not overfill the fuel tank. Overfilling may cause spillage when the vehicle is driven. Spillage may also occur if the fuel expands in high ambient temperatures.

#### **⚠ WARNING**

Only use containers specifically designed for carrying fuel and always remove them from the vehicle to fill them. Failure to do so may result in spillage and cause a fire.

#### **NOTICE**

Do not use leaded fuels, lead substitutes, or fuel additives.

#### **NOTICE**

Fuel system cleaning agents should not be used, unless approved by Land Rover. Unapproved products may be harmful to fuel system components on your vehicle.

#### **NOTICE**

Only use high quality fuel. Using lower quality fuels can damage the engine, fuel and emission control systems.

### OCTANE RATING

Premium unleaded gasoline with a Cost of Living Council (CLC) or Anti Knock Index (AKI) octane rating of 91 or higher should be used.

#### **NOTICE**

Even a very small amount of leaded fuel will damage your vehicle's emission control system and could invalidate the emissions warranty. In addition, leaded fuel will damage the oxygen sensors in the fuel injection system and also seriously damage the catalytic converter.

**Note:** Federal law requires that gasoline octane ratings be posted on the pumps.

**Note:** Mid or regular grade gasoline with a CLC or AKI rating of not lower than 87 may also be used, but performance and fuel economy will be reduced.

Using unleaded fuel with a lower than recommended octane rating, can cause a persistent, heavy engine knock (a metallic rapping noise). If severe, this can lead to engine damage.

**Note:** Occasional, light, engine knock experienced while accelerating or climbing hills is acceptable.

If heavy knock is detected, even when using fuel with the recommended octane rating, consult your Land Rover Retailer/Authorized Repairer to have the problem corrected. Failure to do so is misuse of the vehicle, for which Land Rover is not responsible.

### ETHANOL

#### **NOTICE**

*This vehicle is not suitable for use with fuels containing more than 10% ethanol.*

#### **NOTICE**

*Do not use E85 fuels (85% ethanol content). Equipment necessary for the use of fuels containing more than 10% ethanol is not fitted to this vehicle. If E85 fuels are used, serious engine and fuel system damage will occur.*

Fuels containing up to 10% ethanol (grain alcohol) may be used. Ensure that the fuel has octane ratings no lower than those recommended for unleaded fuel. Most drivers will not notice any operating difference with fuel containing ethanol. If a difference is detected, the use of conventional unleaded fuel should be resumed.

### METHANOL

#### **NOTICE**

*Wherever possible avoid using fuel containing methanol.*

Some fuels contain methanol (methyl or wood alcohol). If you use fuels containing methanol the fuels must also contain co-solvents and corrosion inhibitors for methanol. Also, do not use fuels which contain more than 3% methanol even if they contain co-solvents and corrosion inhibitors. Fuel system damage or vehicle performance problems resulting from the use of such fuels is not the responsibility of Land Rover, and may not be covered under the warranty.

### METHYL TERTIARY BUTYL ETHER (MTBE)

Unleaded fuel containing an oxygenate known as MTBE can be used provided that the ratio of MTBE to conventional fuel does not exceed 15%. MTBE is an Ether based compound derived from gasoline, which has been specified by several refiners as the substance to enhance the Octane rating of fuel.

### REFORMULATED GASOLINE

Fuels specially formulated to further reduce vehicle emissions are available from some gasoline companies. Land Rover recommends the use of reformulated gasoline where available.

### RUNNING OUT OF FUEL

#### **NOTICE**

*Avoid running out of fuel. Doing so can cause damage to the vehicle's engine, fuel, and emission control systems.*

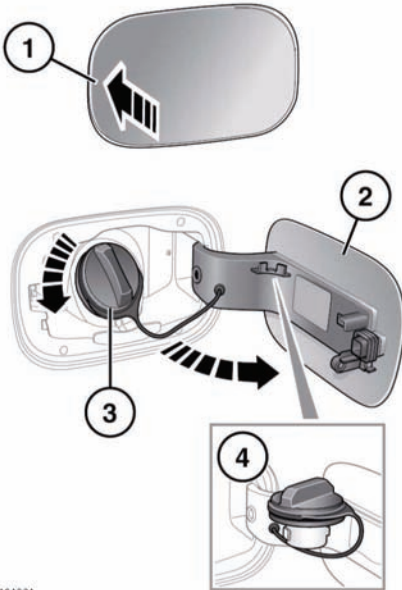
If the vehicle does run out of fuel, a minimum of 1.1 U.S. gallons (4 liters) will be required to restart the engine. The vehicle should be left with the ignition on for 5 minutes after refueling before attempting to restart the engine. The vehicle will need to be driven 1 - 3 miles (1.6 - 5 km) in order to reset the engine management and monitoring systems.

**Note:** *If the vehicle does run out of fuel, seeking qualified assistance is advisable.*

### FUEL FILLER FLAP

#### **⚠ WARNING**

**Take note of all warnings and instructions given on the label affixed to the inside of the filler flap. Failure to do so may result in injury or death.**



E134864

The fuel filler flap is located on the right-hand side of the vehicle, at the rear.

1. Press the left side of the flap to open.
2. Open the flap fully. The label on the inside of the flap indicates the correct fuel to use.
3. Twist the cap counter-clockwise to undo.
4. Use the retaining clip to keep the filler cap out of the way while fuelling.

## FUEL FILLER

### **⚠ WARNING**

When refueling ensure that all windows, doors, and sunroof are fully closed, particularly if young children or animals are in the vehicle.

### **⚠ WARNING**

Do not attempt to fill the tank to its maximum capacity. If the vehicle is to be parked on a slope, in direct sunlight or high ambient temperature, expansion of the fuel could cause spillage.

### **NOTICE**

Check the fuel pump information carefully, to ensure that you are putting the correct fuel into the vehicle.

### **NOTICE**

If the vehicle is filled with incorrect fuel it is essential that you seek qualified assistance before you start the engine.

Filling station pumps are equipped with automatic cut-off sensing to avoid fuel spillage. Fill the tank until the filler nozzle automatically cuts-off the supply. Do not attempt to fill the tank beyond this point.

## FUEL TANK CAPACITY

Avoid the risk of running out of fuel and never intentionally drive the vehicle when the fuel gauge indicates that the tank is empty. When refueling your vehicle after the fuel gauge reads empty, you may not be able to add the fuel quantity shown below, as there will be a small reserve remaining in the tank.

Total tank capacity (usable)	23 U.S. gallons (86 liters)
Fuel specification	Unleaded 91 Octane